

Product datasheet for **TA318039**

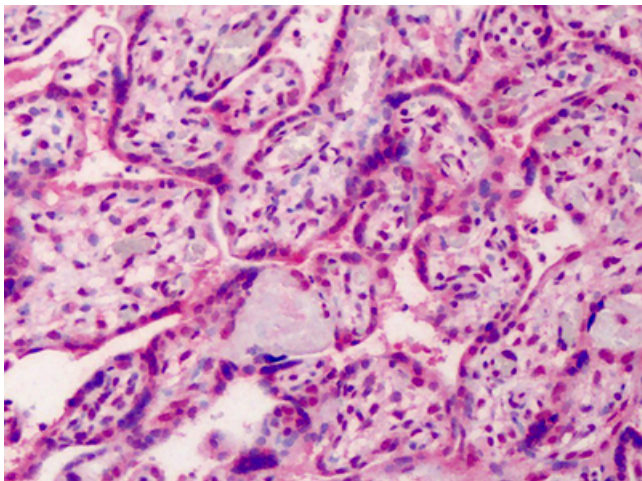
GDF15 Goat Polyclonal Antibody

Product data:

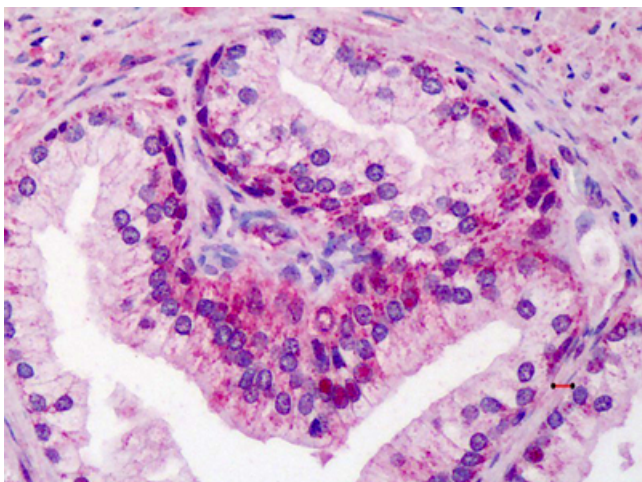
Product Type:	Primary Antibodies
Applications:	IHC
Recommended Dilution:	ELISA (1:2000), IHC-P (5 µg/ml), WB (0.1 - 0.3 µg/ml)
Reactivity:	Gorilla, Human, Gibbon (Predicted: Monkey)
Host:	Goat
Clonality:	Polyclonal
Immunogen:	GDF15 antibody was raised against synthetic peptide C-QKTDGVS LQTYDD from the C-terminus of human GDF15 (NP_004855.2). Percent identity by BLAST analysis: Human, Gorilla, Gibbon, Monkey (100%); Marmoset (93%).
Formulation:	Tris-buffered saline, pH 7.3, 0.5% BSA, 0.02% sodium azide
Concentration:	lot specific
Purification:	Immunoaffinity Chromatography
Conjugation:	Unconjugated
Storage:	Store at -20°C as received.
Stability:	Stable for 12 months from date of receipt.
Gene Name:	growth differentiation factor 15
Database Link:	NP_004855 Entrez Gene 719466 Monkey Entrez Gene 9518 Human Q99988
Synonyms:	GDF-15; MIC-1; MIC1; NAG-1; PDF; PLAB; PTGFB
Note:	Specific for Human GDF15.
Protein Families:	Druggable Genome, Secreted Protein



[View online »](#)

Product images:

Anti-GDF15 antibody IHC of human placenta. Immunohistochemistry of formalin-fixed, paraffin-embedded tissue after heat-induced antigen retrieval. Antibody concentration 5 ug/ml.



Anti-GDF15 antibody IHC of human prostate. Immunohistochemistry of formalin-fixed, paraffin-embedded tissue after heat-induced antigen retrieval. Antibody concentration 5 ug/ml.