

Product datasheet for **TA318038**

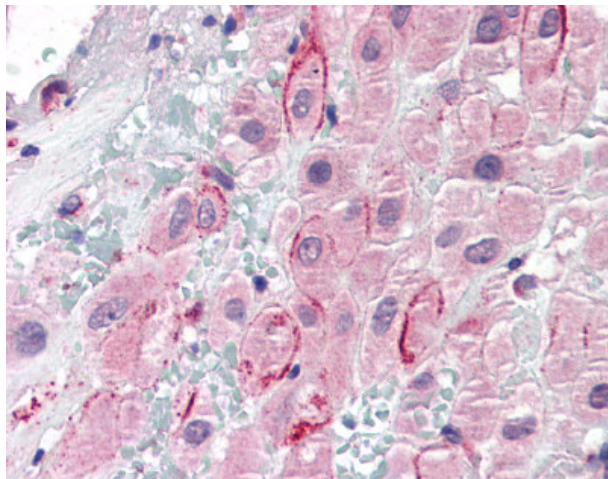
Osteopontin (SPP1) Goat Polyclonal Antibody

Product data:

| | |
|-----------------------|--|
| Product Type: | Primary Antibodies |
| Applications: | IHC |
| Recommended Dilution: | ELISA (1:64000), IHC-P (5 µg/ml), WB (1 - 3 µg/ml) |
| Reactivity: | Gorilla, Human, Gibbon, Orang-Utan (Predicted: Monkey) |
| Host: | Goat |
| Clonality: | Polyclonal |
| Immunogen: | SPP1 / Osteopontin antibody was raised against synthetic peptide C-DPKSKEEDKHLK from the C-terminus of human SPP1 / Osteopontin (NP_001035147.1; NP_000573.1; NP_001035149.1). Percent identity by BLAST analysis: Human, Gorilla, Orangutan, Gibbon, Monkey (100%); Marmoset (92%); Mouse, Panda, Dog, Pig, Arthropotrys (83%). |
| Formulation: | Tris-buffered saline, pH 7.3, 0.5% BSA, 0.02% sodium azide |
| Concentration: | lot specific |
| Purification: | Immunoaffinity Chromatography |
| Conjugation: | Unconjugated |
| Storage: | Store at -20°C as received. |
| Stability: | Stable for 12 months from date of receipt. |
| Gene Name: | secreted phosphoprotein 1 |
| Database Link: | NP_000573 Entrez Gene 704930 Monkey Entrez Gene 6696 Human P10451 |
| Synonyms: | BNSP; BSPI; ETA-1; OPN |
| Note: | Specific for Human SPP1 / Osteopontin. |
| Protein Families: | Druggable Genome, Secreted Protein |
| Protein Pathways: | ECM-receptor interaction, Focal adhesion, Toll-like receptor signaling pathway |



[View online »](#)

Product images:

Anti-Osteopontin antibody IHC of human placenta. Immunohistochemistry of formalin-fixed, paraffin-embedded tissue after heat-induced antigen retrieval. Antibody concentration 5 ug/ml.