

## Product datasheet for **TA318035**

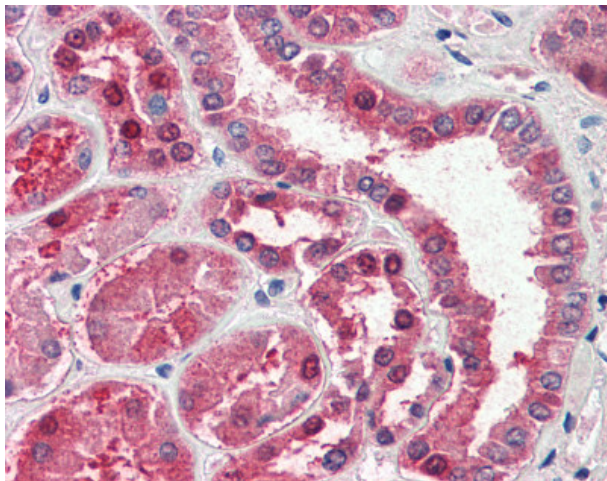
### Aspartate Aminotransferase (GOT1) Goat Polyclonal Antibody

#### Product data:

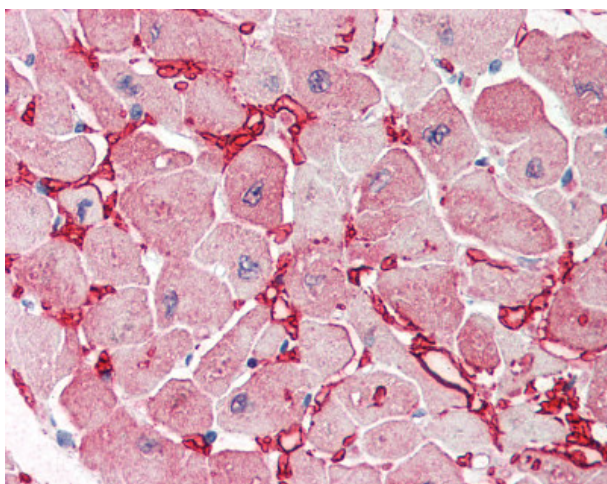
|                       |   |
|-----------------------|---|
| Product Type:         | Primary Antibodies  |
| Applications:         | IHC   |
| Recommended Dilution: | ELISA (1:4000), IHC-P (2.5 - 5 µg/ml), WB (0.01 - 0.1 µg/ml)  |
| Reactivity:           | Chimpanzee, Gorilla, Human, Rat, Gibbon, Hamster, Orang-Utan (Predicted: Monkey, Goat, Pig)   |
| Host:                 | Goat  |
| Clonality:            | Polyclonal  |
| Immunogen:            | Aspartate Aminotransferase antibody was raised against synthetic peptide C-RSYRYWDAEKR from an internal region of human GOT1 (NP_002070.1). Percent identity by BLAST analysis: Human, Chimpanzee, Gorilla, Orangutan, Gibbon, Monkey, Rat, Hamster, Elephant (100%); Marmoset, Goat, Pig, Lizard (91%); Mouse, Panda, Bat, Bovine, Horse, Opossum, Turkey, Chicken, Platypus, Xenopus, Salmon, Pufferfish, Seq squirt (82%). |
| Formulation:          | Tris-buffered saline, pH 7.3, 0.5% BSA, 0.02% sodium azide  |
| Concentration:        | lot specific  |
| Purification:         | Immunoaffinity Chromatography   |
| Conjugation:          | Unconjugated  |
| Storage:              | Store at -20°C as received.   |
| Stability:            | Stable for 12 months from date of receipt.  |
| Gene Name:            | glutamic-oxaloacetic transaminase 1   |
| Database Link:        | <a href="#">NP_002070</a><br><a href="#">Entrez Gene 24401 Rat</a> <a href="#">Entrez Gene 708434 Monkey</a> <a href="#">Entrez Gene 2805 Human</a><br><a href="#">P17174</a>   |
| Synonyms:             | ASTQTL1; cAspAT; cCAT; GIG18  |
| Note:                 | Specific for Human GOT1.  |
| Protein Pathways:     | Alanine, aspartate and glutamate metabolism, Arginine and proline metabolism, Cysteine and methionine metabolism, Metabolic pathways, Phenylalanine, tyrosine and tryptophan biosynthesis, Phenylalanine metabolism, Tyrosine metabolism  |



[View online »](#)

**Product images:**

Anti-GOT1 antibody IHC of human kidney. Immunohistochemistry of formalin-fixed, paraffin-embedded tissue after heat-induced antigen retrieval. Antibody concentration 5 ug/ml.



Anti-GOT1 antibody IHC of human heart. Immunohistochemistry of formalin-fixed, paraffin-embedded tissue after heat-induced antigen retrieval. Antibody concentration 5 ug/ml.