

Product datasheet for **TA318024**

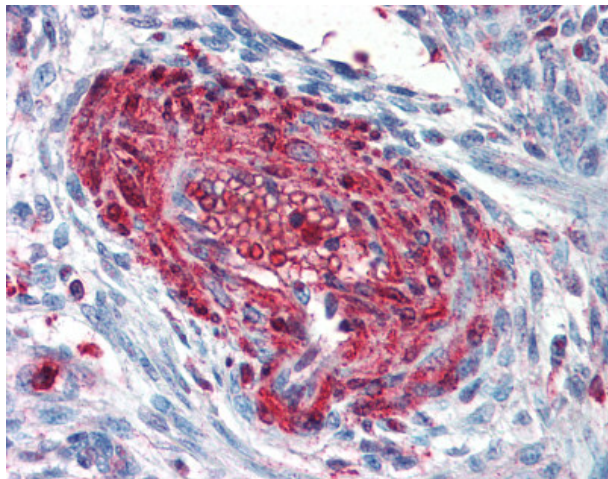
S100A4 Goat Polyclonal Antibody

Product data:

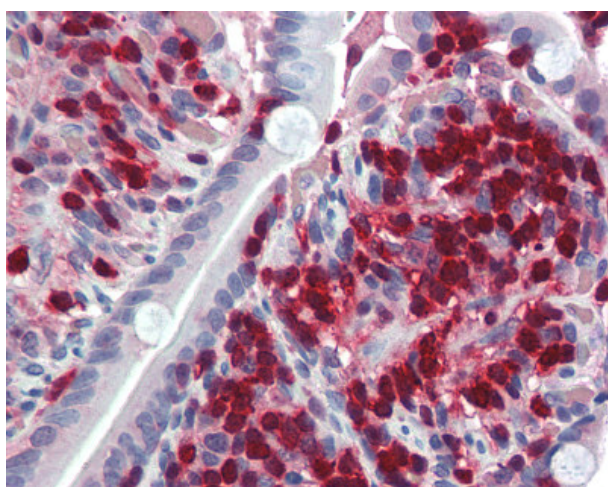
Product Type:	Primary Antibodies
Applications:	IHC
Recommended Dilution:	ELISA (1:128000), IHC-P (2.5 - 5 µg/ml), WB (0.03 - 0.1 µg/ml)
Reactivity:	Bovine, Dog, Gorilla, Human, Pig, Rabbit, Gibbon, Horse (Predicted: Monkey, Bat, Hamster)
Host:	Goat
Clonality:	Polyclonal
Immunogen:	S100A4 / FSP1 antibody was raised against synthetic peptide CNEFFEGFPDKQP from the C-terminus of human S100A4 / FSP1 (NP_002952.1; NP_062427.1). Percent identity by BLAST analysis: Human, Gorilla, Gibbon, Monkey, Panda, Bovine, Dog, Horse, Rabbit, Pig (100%); Marmoset, Hamster, Elephant, Bat (92%); Mouse, Rat (85%).
Formulation:	Tris-buffered saline, pH 7.3, 0.5% BSA, 0.02% sodium azide
Concentration:	lot specific
Purification:	Immunoaffinity Chromatography
Conjugation:	Unconjugated
Storage:	Store at -20°C as received.
Stability:	Stable for 12 months from date of receipt.
Gene Name:	S100 calcium binding protein A4
Database Link:	NP_002952 Entrez Gene 403787 Dog Entrez Gene 715115 Monkey Entrez Gene 6275 Human P26447
Synonyms:	18A2; 42A; CAPL; FSP1; MTS1; P9KA; PEL98
Note:	Specific for Human S100A4 / FSP1. Both variants (NP_002952.1; NP_062427.1) represent identical protein.



[View online »](#)

Product images:

Anti-S100A4 antibody IHC of human uterus, vessel. Immunohistochemistry of formalin-fixed, paraffin-embedded tissue after heat-induced antigen retrieval. Antibody concentration 5 ug/ml.



Anti-S100A4 antibody IHC of human small intestine. Immunohistochemistry of formalin-fixed, paraffin-embedded tissue after heat-induced antigen retrieval. Antibody concentration 5 ug/ml.