

Product datasheet for **TA318023**

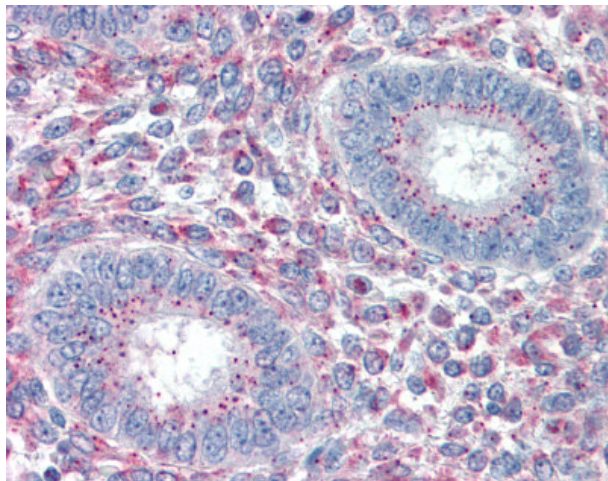
PRRX1 Goat Polyclonal Antibody

Product data:

Product Type:	Primary Antibodies
Applications:	IHC
Recommended Dilution:	ELISA (1:4000), IHC-P (5 µg/ml), WB (1 - 3 µg/ml)
Reactivity:	Bovine, Chicken, Dog, Gorilla, Human, Mouse, Pig, Rabbit, Rat, Gibbon, Hamster, Horse (Predicted: Monkey)
Host:	Goat
Clonality:	Polyclonal
Immunogen:	PRX-1 / PRRX1 antibody was raised against synthetic peptide C-GSDTPQQDNDQ from an internal region of human PRRX1 (NP_008833.1; NP_073207.1). Percent identity by BLAST analysis: Human, Gorilla, Gibbon, Monkey, Mouse, Rat, Hamster, Panda, Bovine, Dog, Horse, Rabbit, Pig, Opossum, Chicken (100%); Marmoset, Elephant (91%).
Formulation:	Tris-buffered saline, pH 7.3, 0.5% BSA, 0.02% sodium azide
Purification:	Immunoaffinity Chromatography
Conjugation:	Unconjugated
Storage:	Store at -20°C as received.
Stability:	Stable for 12 months from date of receipt.
Gene Name:	paired related homeobox 1
Database Link:	NP_008833 Entrez Gene 18933 MouseEntrez Gene 266813 RatEntrez Gene 609105 DogEntrez Gene 702704 MonkeyEntrez Gene 5396 Human P54821
Synonyms:	AGOTC; PHOX1; PMX1; PRX-1; PRX1
Note:	Specific for Human PRRX1. This antibody is expected to recognise both reported isoforms (NP_008833.1; NP_073207.1).
Protein Families:	Transcription Factors



[View online »](#)

Product images:

Anti-PRRX1 antibody IHC of human uterus. Immunohistochemistry of formalin-fixed, paraffin-embedded tissue after heat-induced antigen retrieval. Antibody concentration 5 ug/ml.