

## Product datasheet for **TA318002**

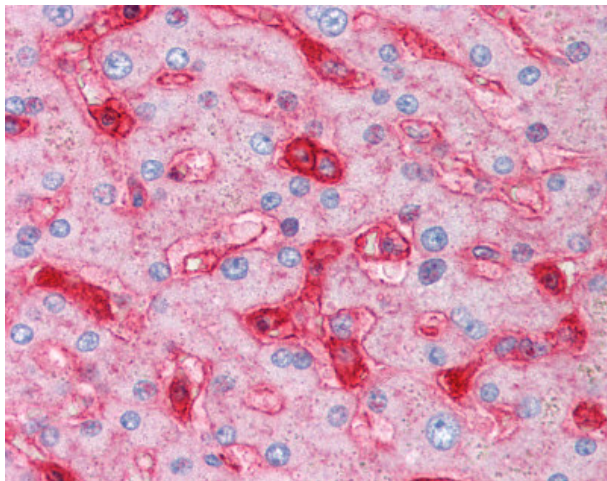
### beta 2 Microglobulin (B2M) Mouse Monoclonal Antibody [Clone ID: 2213]

#### Product data:

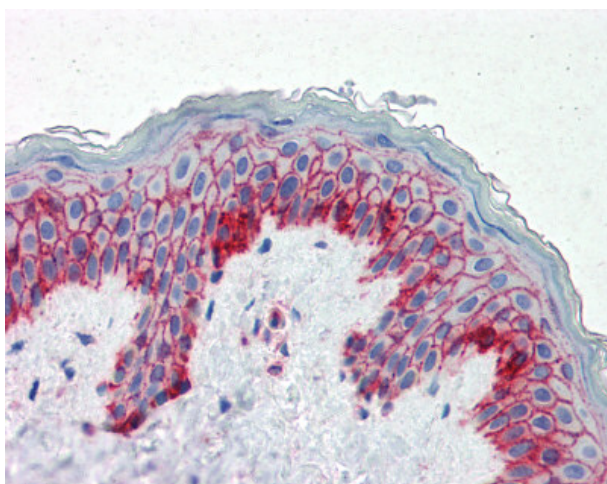
Product Type:	Primary Antibodies
Clone Name:	2213
Applications:	IHC
Recommended Dilution:	ELISA, IHC-P (5 µg/ml)
Reactivity:	Human
Host:	Mouse
Isotype:	IgG1
Clonality:	Monoclonal
Immunogen:	B2M / Beta 2 Microglobulin antibody was raised against highly pure beta-2-microglobulin from human urine.
Formulation:	PBS, pH 8.0, 0.05% sodium azide, 10% glycerol.
Concentration:	lot specific
Purification:	Protein A Column
Conjugation:	Unconjugated
Storage:	Store at -20°C as received.
Stability:	Stable for 12 months from date of receipt.
Gene Name:	beta-2-microglobulin
Database Link:	<a href="#">NP_004039</a> <a href="#">Entrez Gene 567 Human</a> <a href="#">P61769</a>
Synonyms:	IMD43
Note:	Specific for human beta 2 microglobulin. B2M is the beta chain of MHC class I molecules. The precursor protein has a molecular weight of approximately 14 kD and is 119 amino acids in length.
Protein Families:	Druggable Genome, Secreted Protein
Protein Pathways:	Antigen processing and presentation



[View online »](#)

**Product images:**

Anti-B2M antibody IHC of human liver.  
Immunohistochemistry of formalin-fixed,  
paraffin-embedded tissue after heat-induced  
antigen retrieval. Antibody concentration 5 ug/ml.



Anti-B2M antibody IHC of human skin.  
Immunohistochemistry of formalin-fixed,  
paraffin-embedded tissue after heat-induced  
antigen retrieval. Antibody concentration 5 ug/ml.