

## Product datasheet for **TA318001**

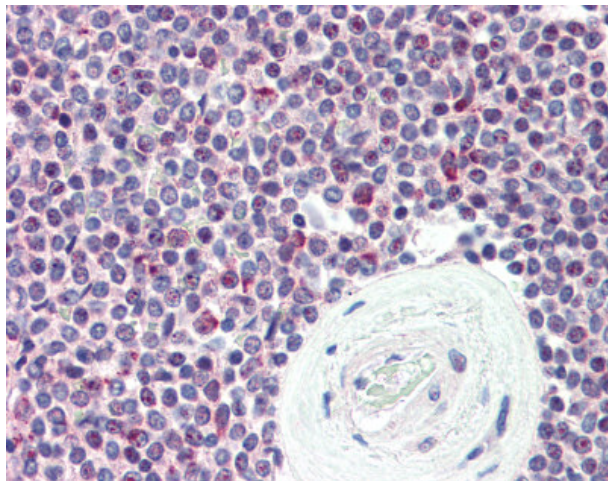
### Synaptogyrin 2 (SYNGR2) Rabbit Polyclonal Antibody

#### Product data:

Product Type:	Primary Antibodies
Applications:	IHC
Recommended Dilution:	IHC-P (2.5 µg/ml)
Reactivity:	Human (Predicted: Monkey)
Host:	Rabbit
Isotype:	IgG
Clonality:	Polyclonal
Immunogen:	SYNGR2 / Synaptogyrin 2 antibody was raised against synthetic 14 amino acid peptide from internal region of human SYNGR2 / Synaptogyrin 2. Percent identity with other species by BLAST analysis: Human (100%); Marmoset (93%); Monkey (86%).
Formulation:	PBS, 0.1% sodium azide.
Concentration:	lot specific
Purification:	Immunoaffinity Chromatography
Conjugation:	Unconjugated
Storage:	Store at -20°C as received.
Stability:	Stable for 12 months from date of receipt.
Gene Name:	synaptogyrin 2
Database Link:	<a href="#">NP_004701</a> <a href="#">Entrez Gene 709310 Monkey</a> <a href="#">Entrez Gene 9144 Human</a> <a href="#">O43760</a>
Synonyms:	MGC102914
Note:	Specific for Human SYNGR2 / Synaptogyrin 2. BLAST analysis of the peptide immunogen showed no homology with other human proteins.
Protein Families:	Transmembrane



[View online »](#)

**Product images:**

Anti-SYNGR2 / Synaptogyrin 2 antibody IHC of human spleen. Immunohistochemistry of formalin-fixed, paraffin-embedded tissue after heat-induced antigen retrieval.