

## Product datasheet for **TA317967**

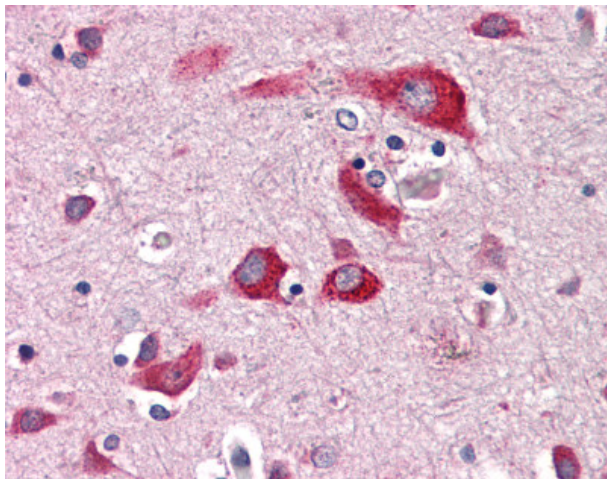
### ENTPD2 Rabbit Polyclonal Antibody

#### Product data:

Product Type:	Primary Antibodies
Applications:	IHC
Recommended Dilution:	IHC-P (2.5 µg/ml)
Reactivity:	Gorilla, Human (Predicted: Monkey)
Host:	Rabbit
Isotype:	IgG
Clonality:	Polyclonal
Immunogen:	ENTPD2 antibody was raised against synthetic 18 amino acid peptide from internal region of human ENTPD2. Percent identity with other species by BLAST analysis: Human, Gorilla (100%); Monkey, Marmoset (94%); Gibbon, Bovine (89%); Elephant, Panda (83%).
Formulation:	PBS, 0.1% sodium azide.
Concentration:	lot specific
Purification:	Immunoaffinity Chromatography
Conjugation:	Unconjugated
Storage:	Store at -20°C as received.
Stability:	Stable for 12 months from date of receipt.
Gene Name:	ectonucleoside triphosphate diphosphohydrolase 2
Database Link:	<a href="#">NP_001237</a> <a href="#">Entrez Gene 721617 Monkey</a> <a href="#">Entrez Gene 954 Human</a> <a href="#">Q9Y5L3</a>
Synonyms:	CD39L1; NTPDase-2
Note:	Specific for Human ENTPD2. BLAST analysis of the peptide immunogen showed no homology with other human proteins.
Protein Families:	Transmembrane
Protein Pathways:	Purine metabolism



[View online »](#)

**Product images:**

Anti-ENTPD2 antibody IHC of human brain, cortex. Immunohistochemistry of formalin-fixed, paraffin-embedded tissue after heat-induced antigen retrieval.