

Product datasheet for **TA317966**

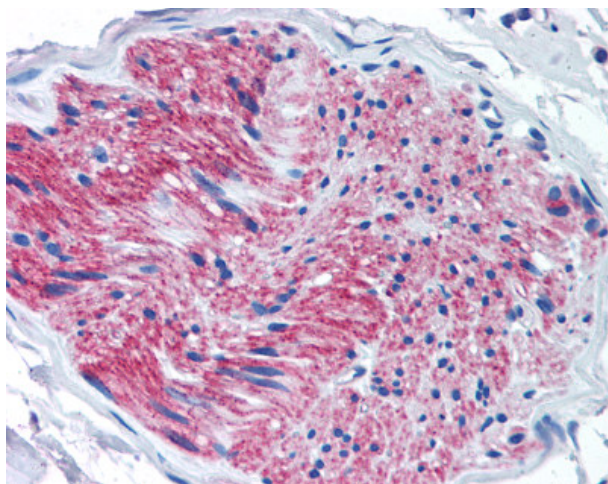
P2RX7 Rabbit Polyclonal Antibody

Product data:

Product Type:	Primary Antibodies
Applications:	IHC
Recommended Dilution:	IHC-P (10 - 20 µg/ml)
Reactivity:	Human, Monkey, Gibbon
Host:	Rabbit
Isotype:	IgG
Clonality:	Polyclonal
Immunogen:	P2RX7 / P2X7 antibody was raised against synthetic 16 amino acid peptide from internal region of human P2RX7 / P2X7. Percent identity with other species by BLAST analysis: Human, Gibbon, Monkey (100%); Marmoset, Pig (88%); Mouse, Horse (81%).
Formulation:	PBS, 0.1% sodium azide.
Concentration:	lot specific
Purification:	Immunoaffinity Chromatography
Conjugation:	Unconjugated
Storage:	Store at -20°C as received.
Stability:	Stable for 12 months from date of receipt.
Gene Name:	purinergic receptor P2X 7
Database Link:	NP_002553 Entrez Gene 699455 Monkey Entrez Gene 5027 Human Q99572
Synonyms:	P2X7
Note:	Specific for Human P2RX7 / P2X7. BLAST analysis of the peptide immunogen showed no homology with other human proteins, except DDX59 (56%).
Protein Families:	Druggable Genome, Ion Channels: ATP Receptors, Transmembrane
Protein Pathways:	Calcium signaling pathway, Neuroactive ligand-receptor interaction



[View online »](#)

Product images:

Anti-P2RX7 / P2X7 antibody IHC of human pancreas, nerve. Immunohistochemistry of formalin-fixed, paraffin-embedded tissue after heat-induced antigen retrieval.