

## Product datasheet for **TA317965**

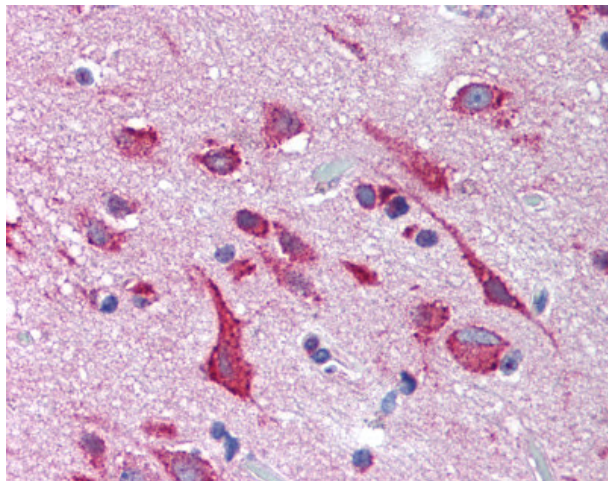
### KCNH2 Rabbit Polyclonal Antibody

#### Product data:

Product Type:	Primary Antibodies
Applications:	IHC
Recommended Dilution:	IHC-P (5 µg/ml)
Reactivity:	Bovine, Dog, Human, Monkey, Mouse, Pig, Rabbit, Rat, Gibbon, Hamster, Horse (Predicted: Bat, Guinea Pig)
Host:	Rabbit
Isotype:	IgG
Clonality:	Polyclonal
Immunogen:	KCNH2 / HERG antibody was raised against synthetic 16 amino acid peptide from internal region of human KCNH2 / Kv11.1. Percent identity with other species by BLAST analysis: Human, Gibbon, Monkey, Marmoset, Mouse, Rat, Hamster, Elephant, Panda, Bovine, Dog, Horse, Rabbit, Pig (100%); Bat, Guinea pig (94%).
Formulation:	PBS, 0.1% sodium azide.
Concentration:	lot specific
Purification:	Immunoaffinity Chromatography
Conjugation:	Unconjugated
Storage:	Store at -20°C as received.
Stability:	Stable for 12 months from date of receipt.
Gene Name:	potassium voltage-gated channel subfamily H member 2
Database Link:	<a href="#">NP_000229</a> <a href="#">Entrez Gene 16511</a> <a href="#">MouseEntrez Gene 117018</a> <a href="#">RatEntrez Gene 403761</a> <a href="#">DogEntrez Gene 714174</a> <a href="#">MonkeyEntrez Gene 3757</a> <a href="#">Human Q12809</a>
Synonyms:	ERG-1; ERG1; H-ERG; HERG; HERG1; Kv11.1; LQT2; SQT1
Note:	Specific for Human KCNH2 / Kv11.1. BLAST analysis of the peptide immunogen showed no homology with other human proteins.
Protein Families:	Druggable Genome, Ion Channels: Potassium, Transcription Factors, Transmembrane



[View online »](#)

**Product images:**

Anti-KCNH2 / Kv11.1 antibody IHC of human brain, cortex. Immunohistochemistry of formalin-fixed, paraffin-embedded tissue after heat-induced antigen retrieval.