

Product datasheet for **TA317964**

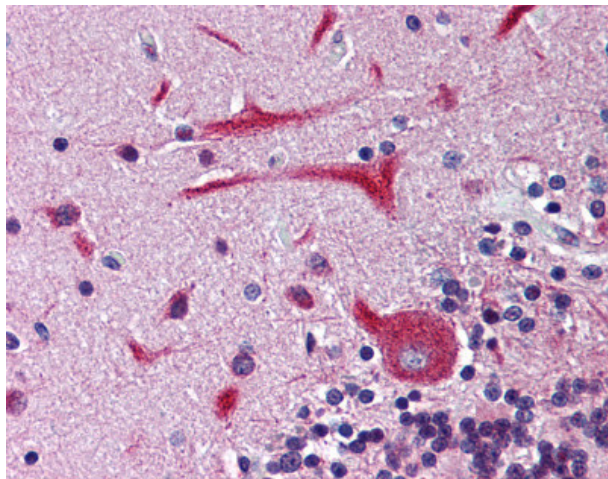
KCNH2 Rabbit Polyclonal Antibody

Product data:

Product Type:	Primary Antibodies
Applications:	IHC
Recommended Dilution:	IHC-P (10 µg/ml)
Reactivity:	Bat, Gorilla, Human, Monkey, Mouse, Rat, Gibbon (Predicted: Dog, Horse, Rabbit, Guinea Pig)
Host:	Rabbit
Isotype:	IgG
Clonality:	Polyclonal
Immunogen:	KCNH2 / HERG antibody was raised against synthetic 17 amino acid peptide from internal region of human KCNH2 / Kv11.1. Percent identity with other species by BLAST analysis: Human, Gorilla, Gibbon, Monkey, Marmoset, Mouse, Rat, Panda, Bat (100%); Elephant, Dog, Horse, Rabbit, Guinea pig (94%); Hamster (82%).
Formulation:	PBS, 0.1% sodium azide.
Concentration:	lot specific
Purification:	Immunoaffinity Chromatography
Conjugation:	Unconjugated
Storage:	Store at -20°C as received.
Stability:	Stable for 12 months from date of receipt.
Gene Name:	potassium voltage-gated channel subfamily H member 2
Database Link:	NP_000229 Entrez Gene 16511 MouseEntrez Gene 117018 RatEntrez Gene 403761 DogEntrez Gene 714174 MonkeyEntrez Gene 3757 Human Q12809
Synonyms:	ERG-1; ERG1; H-ERG; HERG; HERG1; Kv11.1; LQT2; SQT1
Note:	Specific for Human KCNH2 / Kv11.1. BLAST analysis of the peptide immunogen showed no homology with other human proteins.
Protein Families:	Druggable Genome, Ion Channels: Potassium, Transcription Factors, Transmembrane



[View online »](#)

Product images:

Anti-KCNH2 / Kv11.1 antibody IHC of human brain, cerebellum. Immunohistochemistry of formalin-fixed, paraffin-embedded tissue after heat-induced antigen retrieval.