

Product datasheet for **TA317956**

WNT11 Rabbit Polyclonal Antibody

Product data:

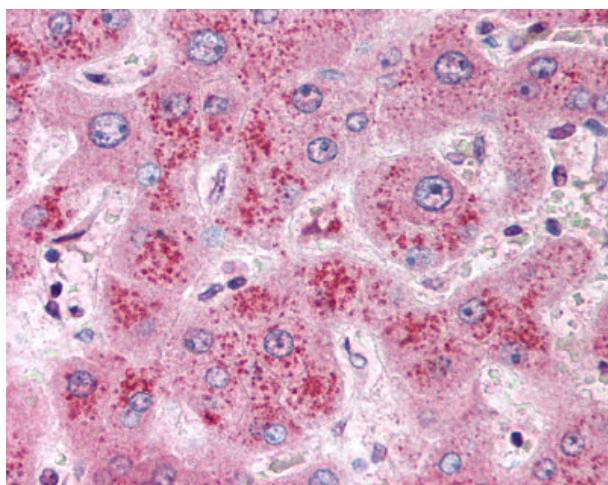
Product Type:	Primary Antibodies
Applications:	IHC
Recommended Dilution:	IHC-P (10 µg/ml)
Reactivity:	Bat, Bovine, Chicken, Dog, Gorilla, Human, Monkey, Mouse, Pig, Rabbit, Rat, Gibbon, Hamster, Horse
Host:	Rabbit
Isotype:	IgG
Clonality:	Polyclonal
Immunogen:	WNT11 antibody was raised against synthetic 15 amino acid peptide from internal region of human WNT11. Percent identity with other species by BLAST analysis: Human, Gorilla, Gibbon, Monkey, Marmoset, Mouse, Rat, Hamster, Elephant, Panda, Dog, Bovine, Bat, Horse, Rabbit, Pig, Turkey, Chicken, Platypus (100%); Opossum, Stickleback (87%); Xenopus, Zebrafish (80%).
Formulation:	PBS, 0.1% sodium azide.
Concentration:	lot specific
Purification:	Immunoaffinity Chromatography
Conjugation:	Unconjugated
Storage:	Store at -20°C as received.
Stability:	Stable for 12 months from date of receipt.
Gene Name:	Wnt family member 11
Database Link:	NP_004617 Entrez Gene 22411 Mouse Entrez Gene 140584 Rat Entrez Gene 485183 Dog Entrez Gene 696845 Monkey Entrez Gene 7481 Human O96014
Synonyms:	HWNT11
Note:	Specific for Human WNT11. BLAST analysis of the peptide immunogen showed no homology with other human proteins.
Protein Families:	Secreted Protein, Transmembrane



[View online »](#)

Protein Pathways: Basal cell carcinoma, Hedgehog signaling pathway, Melanogenesis, Pathways in cancer, Wnt signaling pathway

Product images:



Anti-WNT11 antibody IHC of human liver. Immunohistochemistry of formalin-fixed, paraffin-embedded tissue after heat-induced antigen retrieval.