

Product datasheet for **TA317931**

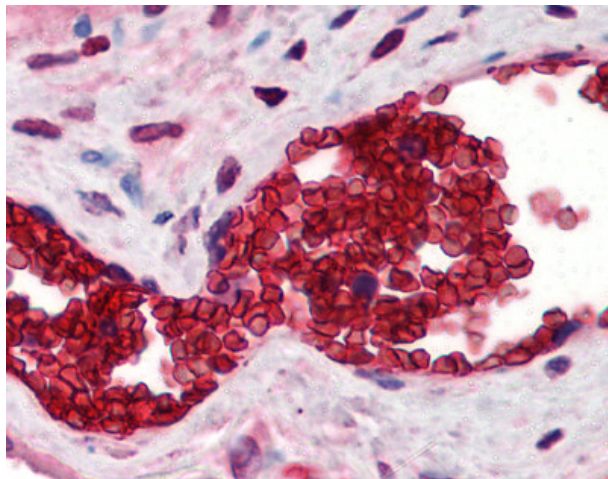
Band 3 (SLC4A1) Rabbit Polyclonal Antibody

Product data:

Product Type:	Primary Antibodies
Applications:	IHC
Recommended Dilution:	ELISA (1 µg/ml), IHC-P (10 µg/ml), WB (1 µg/ml)
Reactivity:	Human
Host:	Rabbit
Isotype:	IgG
Clonality:	Polyclonal
Immunogen:	SLC4A1 / Band 3 / AE1 antibody was raised against synthetic peptide from human SLC4A1 / Band 3.
Formulation:	PBS, 0.01% sodium azide, 50% glycerol.
Purification:	Immunoaffinity Chromatography
Conjugation:	Unconjugated
Storage:	Store at -20°C as received.
Stability:	Stable for 12 months from date of receipt.
Gene Name:	solute carrier family 4 member 1 (Diego blood group)
Database Link:	NP_000333 Entrez Gene 6521 Human P02730
Synonyms:	AE1; BND3; CD233; CHC; DI; EMPB3; EPB3; FR; RTA1A; SAO; SPH4; SW; WD; WD1; WR
Note:	Specific for synthetic peptide corresponding to N-terminal residues of human B3AT(Band 3 anion transport protein)
Protein Families:	Druggable Genome, Transmembrane



[View online »](#)

Product images:

Anti-Band 3 antibody IHC of human placenta, erythrocytes. Immunohistochemistry of formalin-fixed, paraffin-embedded tissue after heat-induced antigen retrieval. Antibody concentration 10 ug/ml.