

Product datasheet for **TA317921**

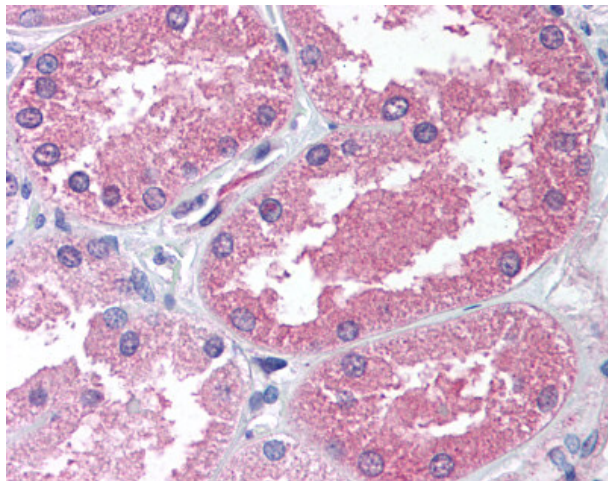
Aminoadipate aminotransferase (AADAT) Rabbit Polyclonal Antibody

Product data:

Product Type:	Primary Antibodies
Applications:	IHC
Recommended Dilution:	IHC-P (2.5 µg/ml)
Reactivity:	Gorilla, Human, Gibbon (Predicted: Monkey, Rabbit)
Host:	Rabbit
Isotype:	IgG
Clonality:	Polyclonal
Immunogen:	KATII / AADAT antibody was raised against synthetic 17 amino acid peptide from N-terminus of human AADAT. Percent identity with other species by BLAST analysis: Human, Gorilla, Gibbon, Elephant (100%); Monkey, Rabbit (94%); Marmoset, Dog (82%).
Formulation:	PBS, 0.1% sodium azide.
Concentration:	lot specific
Purification:	Immunoaffinity Chromatography
Conjugation:	Unconjugated
Storage:	Store at -20°C as received.
Stability:	Stable for 12 months from date of receipt.
Gene Name:	aminoadipate aminotransferase
Database Link:	NP_057312 Entrez Gene 695264 Monkey Entrez Gene 51166 Human Q8N5Z0
Synonyms:	KAT2; KATII; KYAT2
Note:	Specific for Human AADAT. BLAST analysis of the peptide immunogen showed no homology with other human proteins.
Protein Pathways:	Lysine biosynthesis, Lysine degradation, Metabolic pathways, Tryptophan metabolism



[View online »](#)

Product images:

Anti-AADAT antibody IHC of human kidney. Immunohistochemistry of formalin-fixed, paraffin-embedded tissue after heat-induced antigen retrieval.