

## Product datasheet for **TA317920**

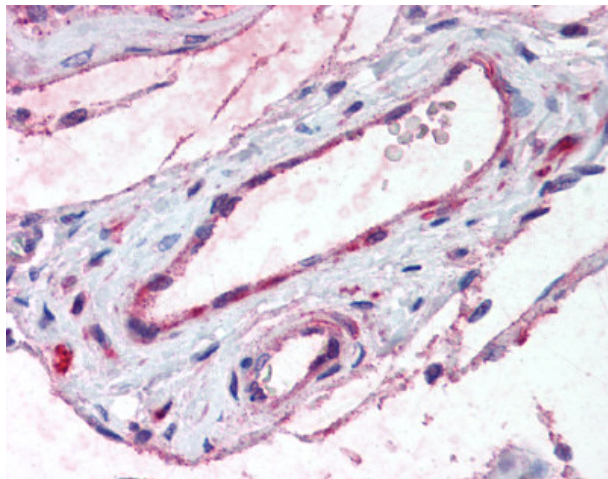
### ADAMTS1 Rabbit Polyclonal Antibody

#### Product data:

Product Type:	Primary Antibodies
Applications:	IHC
Recommended Dilution:	IHC-P (20 µg/ml)
Reactivity:	Gorilla, Human, Monkey, Gibbon, Orang-Utan (Predicted: Horse)
Host:	Rabbit
Isotype:	IgG
Clonality:	Polyclonal
Immunogen:	ADAMTS1 antibody was raised against synthetic 17 amino acid peptide from internal region of human ADAMTS1. Percent identity with other species by BLAST analysis: Human, Gorilla, Orangutan, Gibbon, Monkey, Marmoset (100%); Elephant, Horse (94%); Bat, Pig (88%); Mouse, Rat, Hamster, Rabbit (82%).
Formulation:	PBS, 0.1% sodium azide.
Concentration:	lot specific
Purification:	Immunoaffinity Chromatography
Conjugation:	Unconjugated
Storage:	Store at -20°C as received.
Stability:	Stable for 12 months from date of receipt.
Gene Name:	ADAM metallopeptidase with thrombospondin type 1 motif 1
Database Link:	<a href="#">NP_008919</a> <a href="#">Entrez Gene 707778 Monkey</a> <a href="#">Entrez Gene 9510 Human</a> <a href="#">Q9UHI8</a>
Synonyms:	C3-C5; METH1
Note:	Specific for Human ADAMTS1. BLAST analysis of the peptide immunogen showed no homology with other human proteins.
Protein Families:	Druggable Genome, Protease, Secreted Protein



[View online »](#)

**Product images:**

Anti-ADAMTS1 antibody IHC of human testis, vessels. Immunohistochemistry of formalin-fixed, paraffin-embedded tissue after heat-induced antigen retrieval.