

Product datasheet for **TA317916**

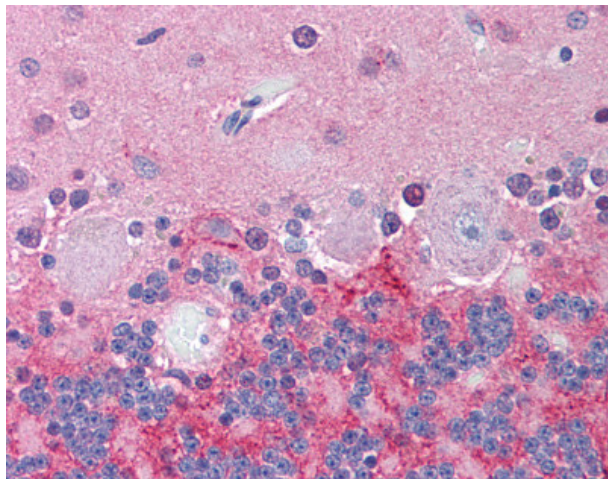
GIRK2 (KCNJ6) Rabbit Polyclonal Antibody

Product data:

Product Type:	Primary Antibodies
Applications:	IHC
Recommended Dilution:	IHC-P (10 - 20 µg/ml)
Reactivity:	Bovine, Dog, Gorilla, Human, Monkey, Mouse, Pig, Rabbit, Rat, Gibbon, Hamster, Horse, Orang-Utan, Guinea Pig (Predicted: Bat)
Host:	Rabbit
Isotype:	IgG
Clonality:	Polyclonal
Immunogen:	KCNJ6 / GIRK2 antibody was raised against synthetic 18 amino acid peptide from N-terminus of human KCNJ6 / GIRK2. Percent identity with other species by BLAST analysis: Human, Gorilla, Orangutan, Gibbon, Monkey, Marmoset, Mouse, Rat, Hamster, Elephant, Dog, Bovine, Horse, Rabbit, Pig, Guinea pig (100%); Panda, Bat (94%); Opossum (89%).
Formulation:	PBS, 0.1% sodium azide.
Concentration:	lot specific
Purification:	Immunoaffinity Chromatography
Conjugation:	Unconjugated
Storage:	Store at -20°C as received.
Stability:	Stable for 12 months from date of receipt.
Gene Name:	potassium voltage-gated channel subfamily J member 6
Database Link:	NP_002231 Entrez Gene 16522 MouseEntrez Gene 25743 RatEntrez Gene 487756 DogEntrez Gene 693675 MonkeyEntrez Gene 3763 Human P48051
Synonyms:	BIR1; GIRK-2; GIRK2; hiGIRK2; KATP-2; KATP2; KCNJ7; KIR3.2
Note:	Specific for Human KCNJ6 / GIRK2. BLAST analysis of the peptide immunogen showed no homology with other human proteins.
Protein Families:	Druggable Genome, Ion Channels: Potassium, Transmembrane



[View online »](#)

Product images:

Anti-KCNJ6 / GIRK2 antibody IHC of human brain, cerebellum. Immunohistochemistry of formalin-fixed, paraffin-embedded tissue after heat-induced antigen retrieval.