

Product datasheet for **TA317909**

HRH1 Goat Polyclonal Antibody

Product data:

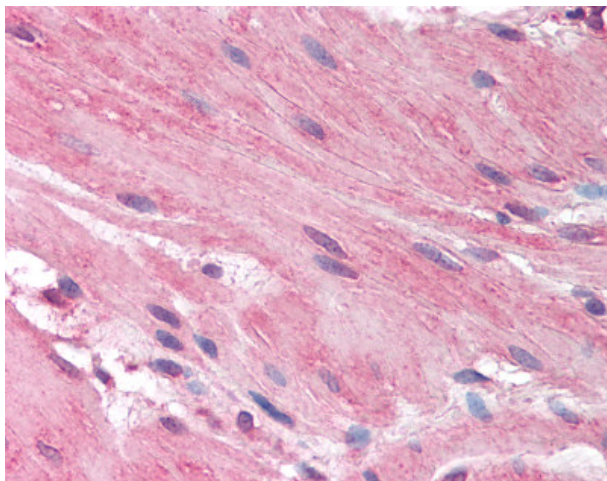
Product Type:	Primary Antibodies
Applications:	IHC
Recommended Dilution:	ELISA (1:32000), IHC-P (2.5 µg/ml)
Reactivity:	Bat, Chimpanzee, Gorilla, Human, Gibbon, Orang-Utan (Predicted: Monkey, Mouse, Rat, Bovine, Dog, Hamster, Horse, Pig, Rabbit, Chicken)
Host:	Goat
Clonality:	Polyclonal
Immunogen:	HRH1 / Histamine H1 Receptor antibody was raised against synthetic peptide CNENFKKTFKRILH from the C-terminus of human HRH1 / Histamine H1 Receptor (NP_000852.1; NP_001091681.1; NP_001091682.1; NP_001091683.1). Percent identity by BLAST analysis: Human, Chimpanzee, Gorilla, Orangutan, Gibbon, Bat, Platypus (100%); Monkey, Mouse, Rat, Dog, Bovine, Hamster, Elephant, Panda, Rabbit, Horse, Pig, Turkey, Chicken (93%); Marmoset, Guinea pig, Xenopus (86%).
Formulation:	Tris-buffered saline, pH 7.3, 0.5% BSA, 0.02% sodium azide
Concentration:	lot specific
Purification:	Immunoaffinity Chromatography
Conjugation:	Unconjugated
Storage:	Store at -20°C as received.
Stability:	Stable for 12 months from date of receipt.
Gene Name:	histamine receptor H1
Database Link:	NP_000852 Entrez Gene 15465 Mouse Entrez Gene 24448 Rat Entrez Gene 403813 Dog Entrez Gene 696359 Monkey Entrez Gene 3269 Human P35367
Synonyms:	H1-R; H1R; HH1R; hisH1
Note:	Specific for Human HRH1 / Histamine H1 Receptor. Variants (NP_000852.1; NP_001091681.1; NP_001091682.1; NP_001091683.1) encode the same protein.
Protein Families:	Druggable Genome, GPCR, Transmembrane



[View online »](#)

Protein Pathways: Calcium signaling pathway, Neuroactive ligand-receptor interaction

Product images:



Anti-HRH1 / Histamine H1 Receptor antibody IHC of human small intestine, smooth muscle. Immunohistochemistry of formalin-fixed, paraffin-embedded tissue after heat-induced antigen retrieval. Antibody concentration 5 ug/ml.