

Product datasheet for **TA317865**

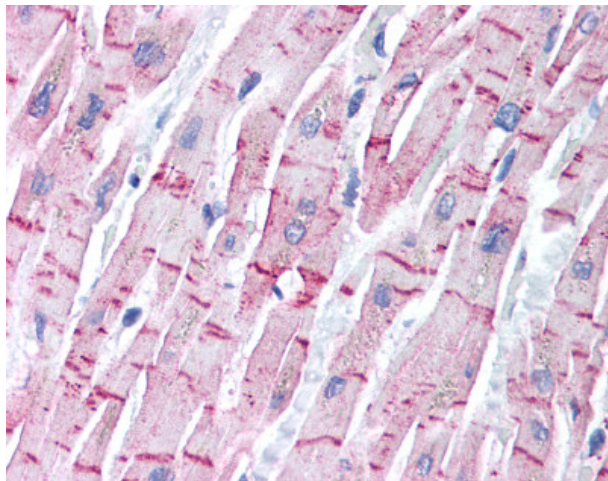
STEAP4 Rabbit Polyclonal Antibody

Product data:

Product Type:	Primary Antibodies
Applications:	IHC
Recommended Dilution:	IHC-P (5 µg/ml), WB (2 µg/ml)
Reactivity:	Human, Mouse, Rat
Host:	Rabbit
Isotype:	IgG
Clonality:	Polyclonal
Immunogen:	STEAP4 antibody was raised against synthetic peptide from human STEAP4.
Formulation:	PBS, 0.02% sodium azide.
Concentration:	lot specific
Purification:	Immunoaffinity Chromatography
Conjugation:	Unconjugated
Storage:	Store at -20°C as received.
Stability:	Stable for 12 months from date of receipt.
Gene Name:	STEAP4 metalloreductase
Database Link:	NP_078912 Entrez Gene 117167 Mouse Entrez Gene 499991 Rat Entrez Gene 79689 Human Q687X5
Synonyms:	STAMP2; TIARP; TNFAIP9
Note:	Specific for a 14 amino acid peptide from near the center of human STEAP4
Protein Families:	Druggable Genome, Transmembrane



[View online »](#)

Product images:

Anti-STEAP4 antibody IHC of human heart. Immunohistochemistry of formalin-fixed, paraffin-embedded tissue after heat-induced antigen retrieval. Antibody concentration 5 ug/ml.