

Product datasheet for **TA317859**

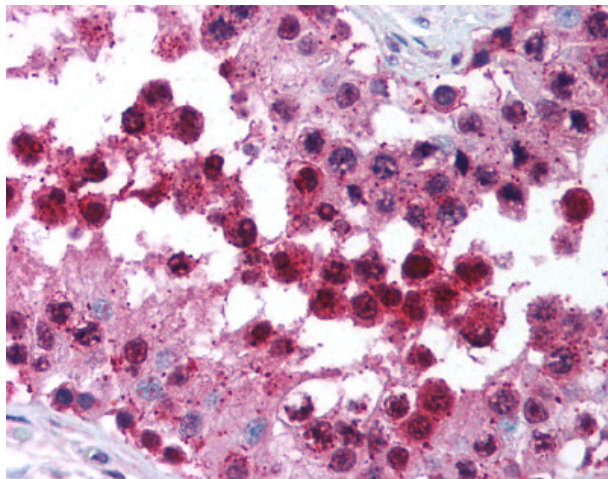
PARC (CUL9) Rabbit Polyclonal Antibody

Product data:

Product Type:	Primary Antibodies
Applications:	IHC
Recommended Dilution:	ICC, IHC-P (5 µg/ml), WB (1 - 2 µg/ml)
Reactivity:	Human, Mouse
Host:	Rabbit
Isotype:	IgG
Clonality:	Polyclonal
Immunogen:	CUL9 / Cullin 9 antibody was raised against synthetic peptide from human CUL9 / Cullin 9.
Formulation:	PBS, 0.02% sodium azide.
Concentration:	lot specific
Purification:	Immunoaffinity Chromatography
Conjugation:	Unconjugated
Storage:	Store at -20°C as received.
Stability:	Stable for 12 months from date of receipt.
Gene Name:	cullin 9
Database Link:	NP_055904 Entrez Gene 78309 Mouse Entrez Gene 23113 Human Q8IWT3
Synonyms:	H7AP1; PARC
Note:	Specific for 17 amino acid peptide from near the carboxy terminus of human PARC
Protein Families:	Druggable Genome



[View online »](#)

Product images:

Anti-CUL9 / Cullin 9 antibody IHC of human testis. Immunohistochemistry of formalin-fixed, paraffin-embedded tissue after heat-induced antigen retrieval. Antibody concentration 5 ug/ml.