

Product datasheet for **TA317846**

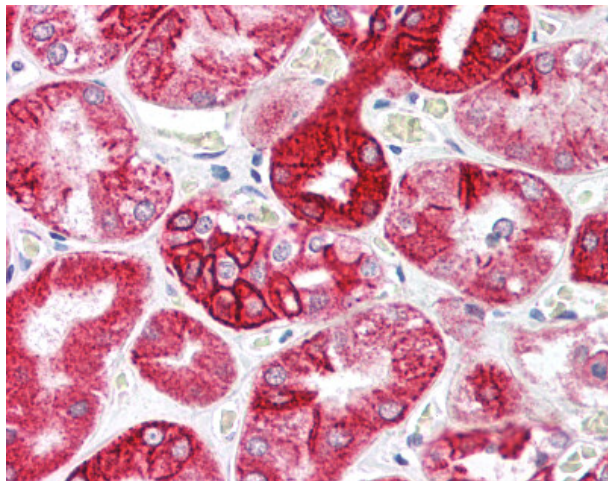
IL23 (IL23A) Rabbit Polyclonal Antibody

Product data:

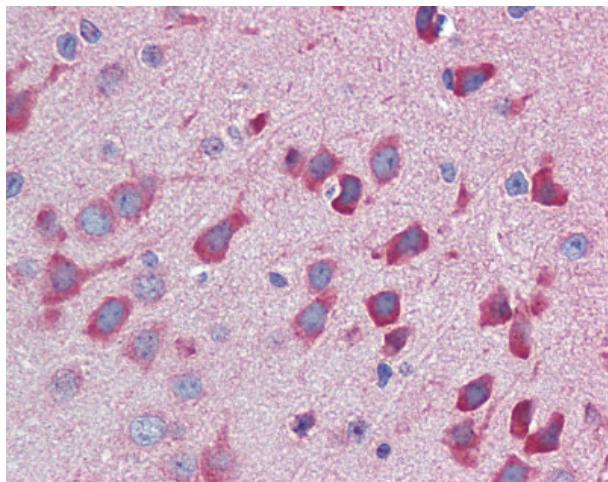
Product Type:	Primary Antibodies
Applications:	IHC
Recommended Dilution:	ICC, IHC-P (5 µg/ml), WB (2 - 4 µg/ml)
Host:	Rabbit
Isotype:	IgG
Clonality:	Polyclonal
Immunogen:	IL23A / IL-23 p19 antibody was raised against synthetic peptide from human IL23A / IL-23.
Formulation:	PBS, 0.02% sodium azide.
Concentration:	lot specific
Purification:	Immunoaffinity Chromatography
Conjugation:	Unconjugated
Storage:	Store at -20°C as received.
Stability:	Stable for 12 months from date of receipt.
Gene Name:	interleukin 23 subunit alpha
Database Link:	NP_057668 Entrez Gene 51561 Human Q9NPF7
Synonyms:	IL-23; IL-23A; IL23P19; P19; SGRF
Note:	Specific for 14 amino acid peptide from near the carboxy terminus of human IL-23
Protein Families:	Druggable Genome, Secreted Protein
Protein Pathways:	Cytokine-cytokine receptor interaction, Jak-STAT signaling pathway



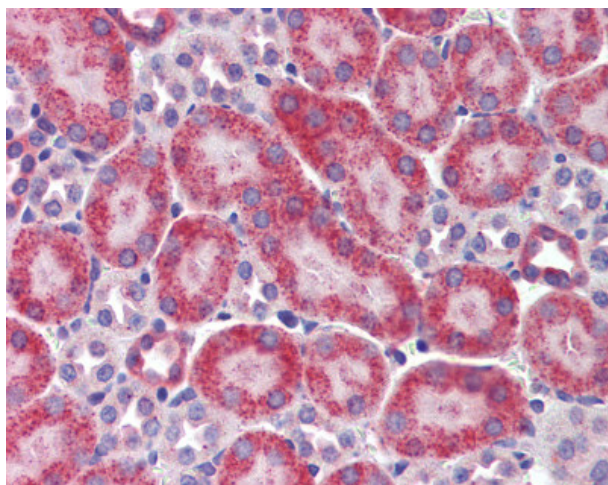
[View online »](#)

Product images:

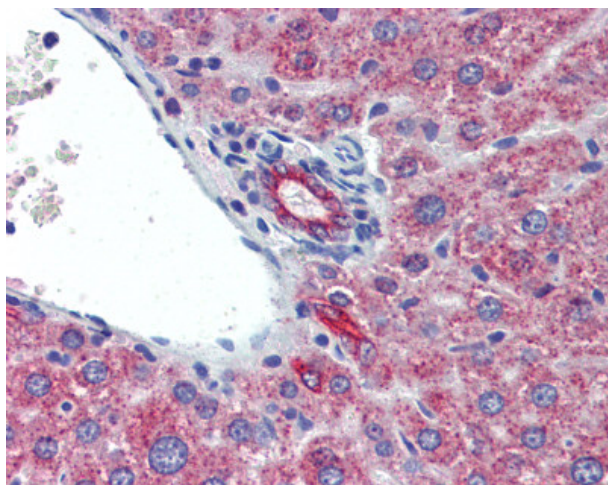
Anti-IL-23 p19 antibody IHC staining of human kidney. Immunohistochemistry of formalin-fixed, paraffin-embedded tissue after heat-induced antigen retrieval. Antibody concentration 5 ug/ml.



Anti-IL-23 p19 antibody IHC staining of mouse brain. Immunohistochemistry of formalin-fixed, paraffin-embedded tissue after heat-induced antigen retrieval. Antibody concentration 5 ug/ml.



Anti-IL-23 p19 antibody IHC staining of mouse kidney. Immunohistochemistry of formalin-fixed, paraffin-embedded tissue after heat-induced antigen retrieval. Antibody concentration 5 ug/ml.



Anti-IL-23 p19 antibody IHC staining of mouse liver. Immunohistochemistry of formalin-fixed, paraffin-embedded tissue after heat-induced antigen retrieval. Antibody concentration 5 ug/ml.