

## Product datasheet for **TA317830**

### GRK5 Rabbit Polyclonal Antibody

#### Product data:

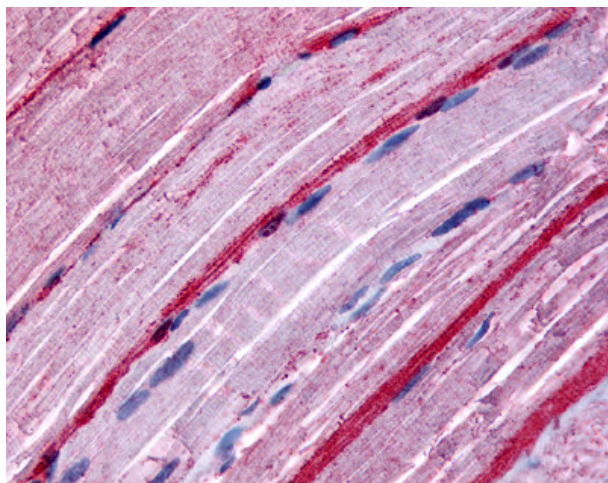
Product Type:	Primary Antibodies
Applications:	IHC
Recommended Dilution:	IHC-P (7 µg/ml)
Reactivity:	Bat, Bovine, Chicken, Human, Monkey, Mouse, Pig, Rat, Gibbon, Horse (Predicted: Dog, Xenopus)
Host:	Rabbit
Isotype:	IgG
Clonality:	Polyclonal
Immunogen:	GRK5 antibody was raised against synthetic 15 amino acid peptide from internal region of human GRK5. Percent identity with other species by BLAST analysis: Human, Gibbon, Monkey, Marmoset, Mouse, Rat, Bat, Bovine, Panda, Horse, Pig, Opossum, Turkey, Chicken, Platypus (100%); Orangutan, Dog, Elephant, Xenopus (93%).
Formulation:	PBS, 0.1% sodium azide.
Concentration:	lot specific
Purification:	Immunoaffinity Chromatography
Conjugation:	Unconjugated
Storage:	Store at -20°C as received.
Stability:	Stable for 12 months from date of receipt.
Gene Name:	G protein-coupled receptor kinase 5
Database Link:	<a href="#">NP_005299</a> <a href="#">Entrez Gene 14773 Mouse</a> <a href="#">Entrez Gene 59075 Rat</a> <a href="#">Entrez Gene 486915 Dog</a> <a href="#">Entrez Gene 100427251 Monkey</a> <a href="#">Entrez Gene 2869 Human P34947</a>
Synonyms:	GPRK5
Note:	Specific for Human GRK5. BLAST analysis of the peptide immunogen showed no homology with other human proteins.
Protein Families:	Druggable Genome, Protein Kinase



[View online »](#)

Protein Pathways: Chemokine signaling pathway, Endocytosis

**Product images:**



Anti-GRK5 antibody IHC of human skeletal muscle. Immunohistochemistry of formalin-fixed, paraffin-embedded tissue after heat-induced antigen retrieval.