

Product datasheet for **TA317798**

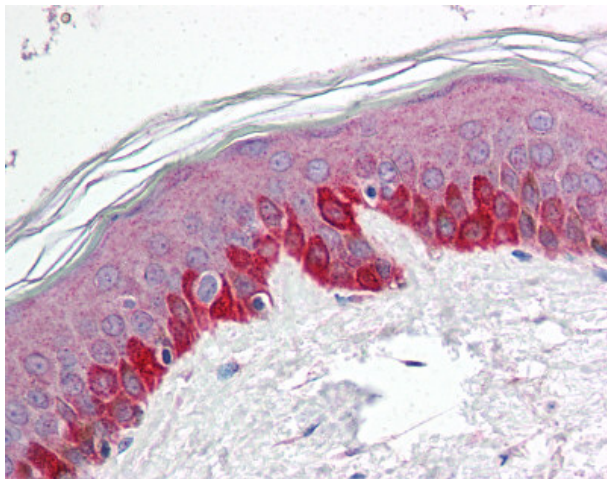
LKB1 (STK11) Rabbit Polyclonal Antibody

Product data:

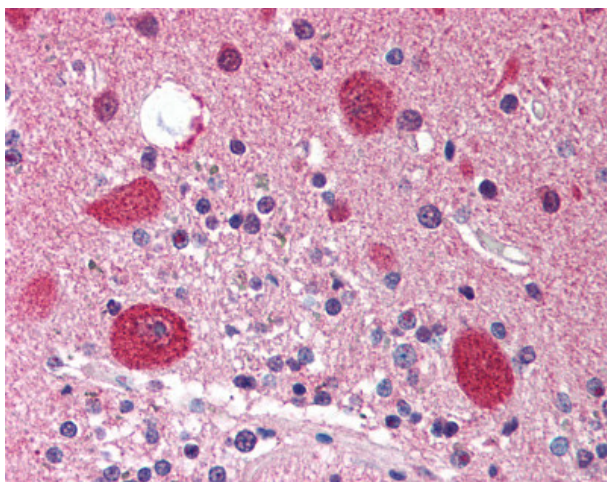
Product Type:	Primary Antibodies
Applications:	IHC
Recommended Dilution:	IHC-P (5 µg/ml)
Reactivity:	Human, Mouse
Host:	Rabbit
Isotype:	IgG
Clonality:	Polyclonal
Immunogen:	STK11 / LKB1 antibody was raised against synthetic peptide from human STK11 / LKB1.
Formulation:	PBS, 0.02% sodium azide.
Purification:	Immunoaffinity Chromatography
Conjugation:	Unconjugated
Storage:	Store at -20°C as received.
Stability:	Stable for 12 months from date of receipt.
Gene Name:	serine/threonine kinase 11
Database Link:	NP_000446 Entrez Gene 20869 Mouse Entrez Gene 6794 Human Q15831
Synonyms:	hLKB1; LKB1; PJS
Note:	Specific for 15 amino acid peptide from near the carboxy terminus of human LKB1
Protein Families:	Druggable Genome, Protein Kinase
Protein Pathways:	Adipocytokine signaling pathway, mTOR signaling pathway



[View online »](#)

Product images:

Anti-STK11 / LKB1 antibody IHC of human skin. Immunohistochemistry of formalin-fixed, paraffin-embedded tissue after heat-induced antigen retrieval. Antibody concentration 5 ug/ml.



Anti-STK11 / LKB1 antibody IHC of human brain, cerebellum. Immunohistochemistry of formalin-fixed, paraffin-embedded tissue after heat-induced antigen retrieval. Antibody concentration 5 ug/ml.