

## Product datasheet for **TA317793**

### LAMP1 Rabbit Polyclonal Antibody

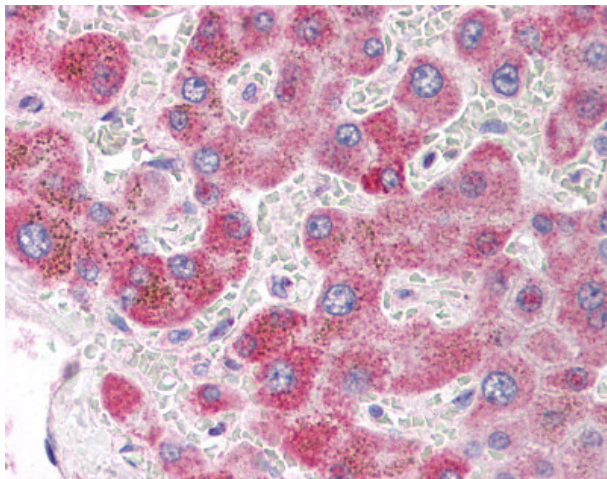
#### Product data:

Product Type:	Primary Antibodies
Applications:	IHC
Recommended Dilution:	IHC-P (5 µg/ml)
Reactivity:	Human, Mouse, Rat
Host:	Rabbit
Isotype:	IgG
Clonality:	Polyclonal
Immunogen:	LAMP1 / CD107a antibody was raised against synthetic peptide from human LAMP1.
Formulation:	PBS, 0.02% sodium azide.
Purification:	Immunoaffinity Chromatography
Conjugation:	Unconjugated
Storage:	Store at -20°C as received.
Stability:	Stable for 12 months from date of receipt.
Gene Name:	lysosomal associated membrane protein 1
Database Link:	<a href="#">NP_005552</a> <a href="#">Entrez Gene 16783 Mouse</a> <a href="#">Entrez Gene 25328 Rat</a> <a href="#">Entrez Gene 3916 Human</a> <a href="#">P11279</a>
Synonyms:	CD107a; LAMPA; LGP120
Note:	Specific for 15 amino acid peptide from near the center of human LAMP-1
Protein Families:	ES Cell Differentiation/IPS, Transmembrane
Protein Pathways:	Lysosome

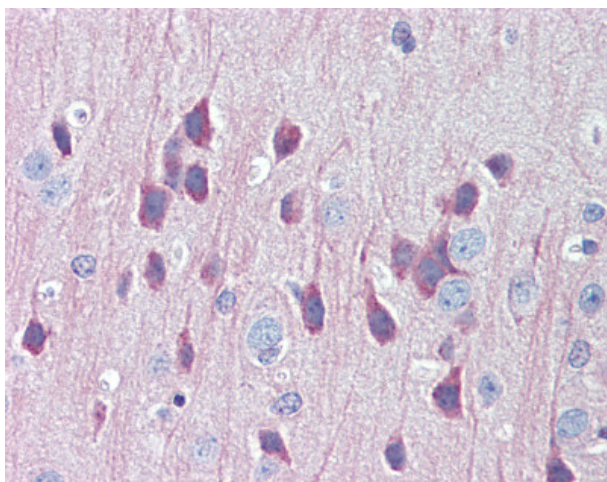


[View online »](#)

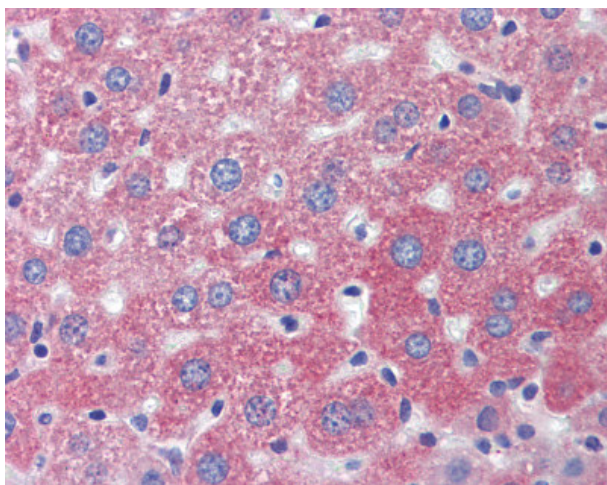
## Product images:



Anti-LAMP1 antibody IHC of human liver. Immunohistochemistry of formalin-fixed, paraffin-embedded tissue after heat-induced antigen retrieval. Antibody concentration 5 ug/ml.



Anti-LAMP1 antibody IHC of mouse brain. Immunohistochemistry of formalin-fixed, paraffin-embedded tissue after heat-induced antigen retrieval. Antibody concentration 5 ug/ml.



Anti-LAMP1 antibody IHC of mouse liver.  
Immunohistochemistry of formalin-fixed,  
paraffin-embedded tissue after heat-induced  
antigen retrieval. Antibody concentration 5 ug/ml.