

Product datasheet for **TA317786**

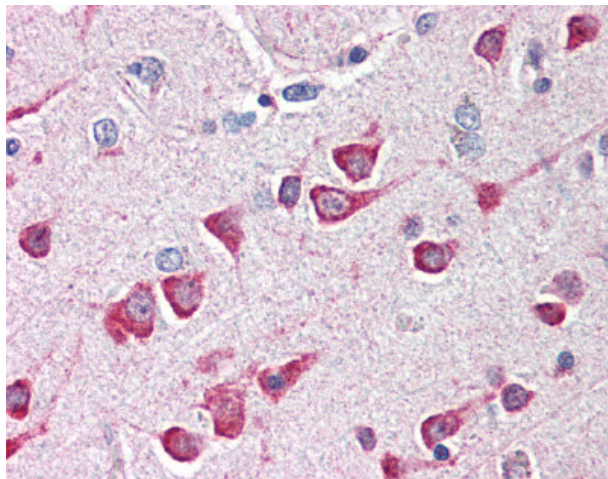
FAIM2 Rabbit Polyclonal Antibody

Product data:

Product Type:	Primary Antibodies
Applications:	IHC
Recommended Dilution:	IHC-P (5 µg/ml)
Reactivity:	Human, Mouse, Rat
Host:	Rabbit
Isotype:	IgG
Clonality:	Polyclonal
Immunogen:	FAIM2 / LIFEGUARD antibody was raised against synthetic peptide from human FAIM2.
Formulation:	PBS, 0.02% sodium azide.
Concentration:	lot specific
Purification:	Immunoaffinity Chromatography
Conjugation:	Unconjugated
Storage:	Store at -20°C as received.
Stability:	Stable for 12 months from date of receipt.
Gene Name:	Fas apoptotic inhibitory molecule 2
Database Link:	NP_036438 Entrez Gene 72393 Mouse Entrez Gene 246274 Rat Entrez Gene 23017 Human Q9BWQ8
Synonyms:	LFG; LFG2; NGP35; NMP35; TMBIM2
Note:	Specific for 16 amino acid peptide from near the amino terminus of human LFG.
Protein Families:	Transmembrane



[View online »](#)

Product images:

Anti-FAIM2 antibody IHC of human brain, cortex. Immunohistochemistry of formalin-fixed, paraffin-embedded tissue after heat-induced antigen retrieval. Antibody concentration 5 ug/ml.