

Product datasheet for **TA317769**

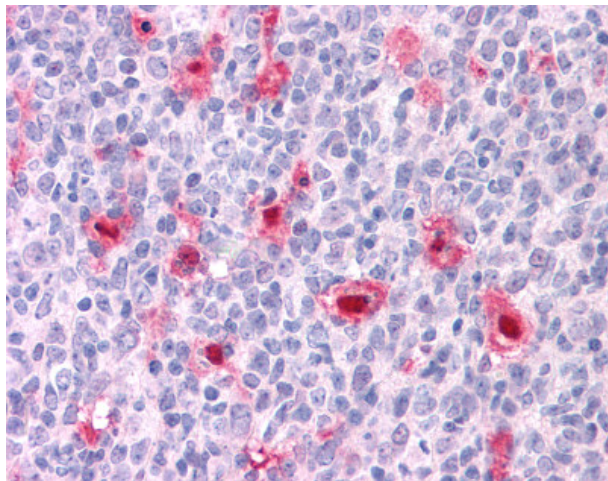
EDG6 (S1PR4) Rabbit Polyclonal Antibody

Product data:

| | |
|-----------------------|-----------------------------------------------------------------------------------------------|
| Product Type: | Primary Antibodies |
| Applications: | IHC |
| Recommended Dilution: | ELISA (1:000 - 1:1000), IHC-P (10 µg/ml) |
| Reactivity: | Human |
| Host: | Rabbit |
| Isotype: | IgG |
| Clonality: | Polyclonal |
| Immunogen: | S1PR4 / SIP4 / EDG6 antibody was raised against synthetic peptide from human S1PR4 / EDG6. |
| Formulation: | PBS, 0.1% sodium azide. |
| Concentration: | lot specific |
| Purification: | Protein G Column |
| Conjugation: | Unconjugated |
| Storage: | Store at -20°C as received. |
| Stability: | Stable for 12 months from date of receipt. |
| Gene Name: | sphingosine-1-phosphate receptor 4 |
| Database Link: | NP_003766 Entrez Gene 8698 Human O95977 |
| Synonyms: | EDG6; LPC1; S1P4; SLP4 |
| Protein Families: | Druggable Genome, GPCR, Transmembrane |
| Protein Pathways: | Neuroactive ligand-receptor interaction |



[View online »](#)

Product images:

Anti-EDG6 antibody IHC of human tonsil. Immunohistochemistry of formalin-fixed, paraffin-embedded tissue after heat-induced antigen retrieval. Antibody concentration 10 ug/ml.