

## Product datasheet for **TA317705**

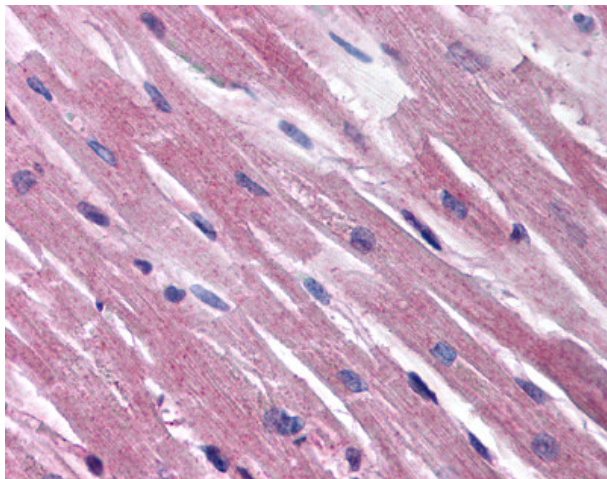
### EDG1 (S1PR1) Rabbit Polyclonal Antibody

#### Product data:

Product Type:	Primary Antibodies
Applications:	IHC
Recommended Dilution:	ELISA (1:000 - 1:1000), IHC-P (10 µg/ml)
Reactivity:	Human
Host:	Rabbit
Isotype:	IgG
Clonality:	Polyclonal
Immunogen:	S1PR1 / EDG1 / S1P1 antibody was raised against synthetic peptide from human S1PR1 / EDG1.
Formulation:	PBS, 0.09% sodium azide.
Purification:	Protein G Column
Conjugation:	Unconjugated
Storage:	Store at -20°C as received.
Stability:	Stable for 12 months from date of receipt.
Gene Name:	sphingosine-1-phosphate receptor 1
Database Link:	<a href="#">NP_001391</a> <a href="#">Entrez Gene 1901 Human</a> <a href="#">P21453</a>
Synonyms:	CD363; CHEDG1; D1S3362; ECGF1; EDG-1; EDG1; S1P1
Note:	Specific for Peptide corresponding to amino acids 25-40 of human Edg1.
Protein Families:	Druggable Genome, GPCR, Transmembrane
Protein Pathways:	Neuroactive ligand-receptor interaction



[View online »](#)

**Product images:**

Anti-S1PR1 / EDG1 antibody IHC of human heart. Immunohistochemistry of formalin-fixed, paraffin-embedded tissue after heat-induced antigen retrieval. Antibody concentration 10 ug/ml.