

Product datasheet for **TA317698**

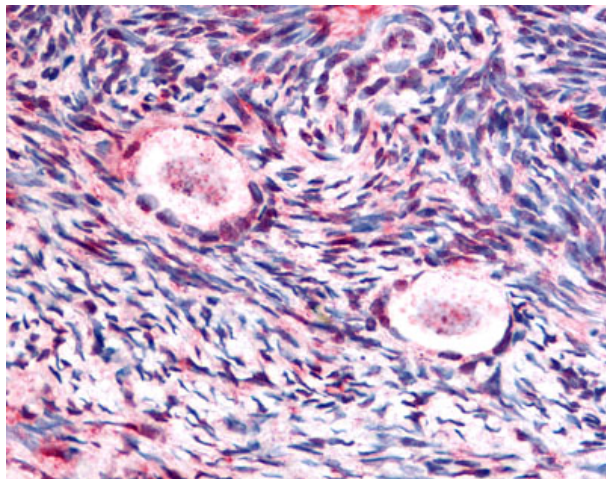
GSK3 beta (GSK3B) Rabbit Polyclonal Antibody

Product data:

Product Type:	Primary Antibodies
Applications:	IHC
Recommended Dilution:	ELISA (1:10000 - 1:50000), IHC-P (5 µg/ml), IP, WB (1:500 - 1:3000)
Reactivity:	Human
Host:	Rabbit
Isotype:	IgG
Clonality:	Polyclonal
Immunogen:	GSK3B / GSK3 Beta antibody was raised against synthetic peptide from human GSK3B / GSK3 Beta.
Formulation:	0.02 M potassium phosphate, 0.15 M sodium chloride, pH 7.2, 0.01% sodium azide.
Purification:	Immunoaffinity Chromatography
Conjugation:	Unconjugated
Storage:	Store at -20°C as received.
Stability:	Stable for 12 months from date of receipt.
Gene Name:	glycogen synthase kinase 3 beta
Database Link:	NP_002084 Entrez Gene 2932 Human P49841
Synonyms:	glycogen synthase kinase-3 beta; glycogen synthase kinase 3 beta; GSK3beta isoform
Note:	The aa 4-12 of human GSK3 beta.
Protein Families:	Druggable Genome, Protein Kinase
Protein Pathways:	Alzheimer's disease, Axon guidance, Basal cell carcinoma, B cell receptor signaling pathway, Cell cycle, Chemokine signaling pathway, Colorectal cancer, Endometrial cancer, ErbB signaling pathway, Focal adhesion, Hedgehog signaling pathway, Insulin signaling pathway, Melanogenesis, Neurotrophin signaling pathway, Pathways in cancer, Prostate cancer, T cell receptor signaling pathway, Wnt signaling pathway



[View online »](#)

Product images:

Anti-GSK3B / GSK3 Beta antibody IHC of human ovary. Immunohistochemistry of formalin-fixed, paraffin-embedded tissue after heat-induced antigen retrieval. Antibody concentration 5 ug/ml.