

## Product datasheet for **TA317693**

### PLA2G3 Rabbit Polyclonal Antibody

#### Product data:

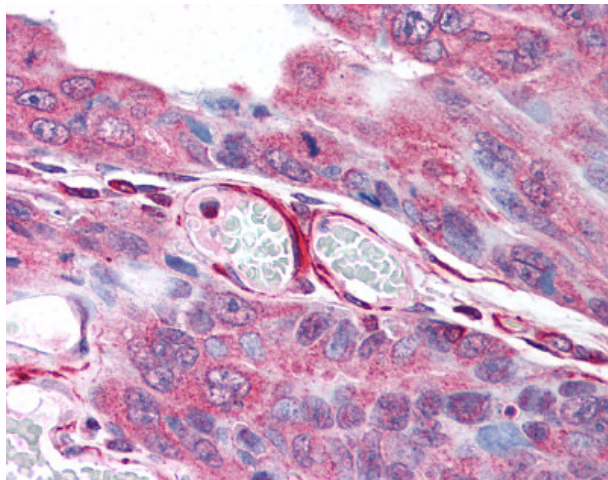
|                       |   |
|-----------------------|---|
| Product Type:         | Primary Antibodies  |
| Applications:         | IHC   |
| Recommended Dilution: | IHC-P (2.5 µg/ml)   |
| Reactivity:           | Bovine, Gorilla, Human, Monkey, Pig, Gibbon (Predicted: Mouse, Horse, Rabbit)   |
| Host:                 | Rabbit  |
| Isotype:              | IgG   |
| Clonality:            | Polyclonal  |
| Immunogen:            | PLA2G3 antibody was raised against synthetic 12 amino acid peptide from internal region of human PLA2G3. Percent identity with other species by BLAST analysis: Human, Gorilla, Gibbon, Monkey, Marmoset, Bovine, Elephant, Panda, Pig (100%); Mouse, Horse, Rabbit (92%); Bat, Dog, Opossum (83%). |
| Formulation:          | PBS, 0.1% sodium azide.   |
| Concentration:        | lot specific  |
| Purification:         | Immunoaffinity Chromatography   |
| Conjugation:          | Unconjugated  |
| Storage:              | Store at -20°C as received.   |
| Stability:            | Stable for 12 months from date of receipt.  |
| Gene Name:            | phospholipase A2 group III  |
| Database Link:        | <a href="#">NP_056530</a><br><a href="#">Entrez Gene 237625 Mouse</a> <a href="#">Entrez Gene 718321 Monkey</a> <a href="#">Entrez Gene 50487 Human</a><br><a href="#">Q9NZ20</a>   |
| Synonyms:             | GIII-SPLA2; sPLA2-III; SPLA2III   |
| Note:                 | Specific for Human PLA2G3. BLAST analysis of the peptide immunogen showed no homology with other human proteins.  |
| Protein Families:     | Druggable Genome, Secreted Protein  |



[View online »](#)

**Protein Pathways:**

alpha-Linolenic acid metabolism, Arachidonic acid metabolism, Ether lipid metabolism, Fc epsilon RI signaling pathway, Glycerophospholipid metabolism, GnRH signaling pathway, Linoleic acid metabolism, Long-term depression, MAPK signaling pathway, Metabolic pathways, Vascular smooth muscle contraction, VEGF signaling pathway

**Product images:**

Anti-PLA2G3 antibody IHC of human colon carcinoma. Immunohistochemistry of formalin-fixed, paraffin-embedded tissue after heat-induced antigen retrieval.