

## Product datasheet for **TA317692**

### PLA2G3 Rabbit Polyclonal Antibody

#### Product data:

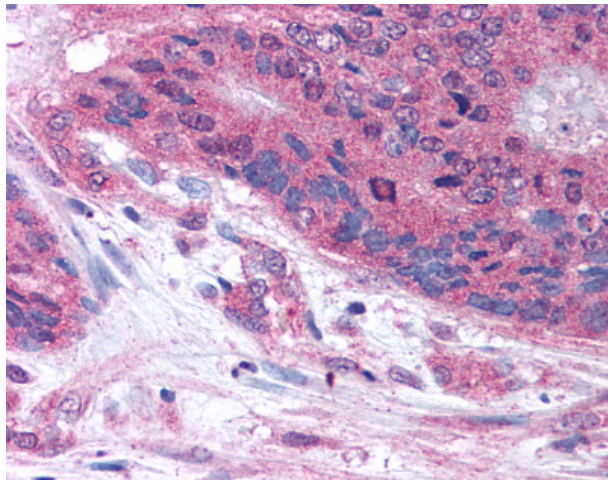
Product Type:	Primary Antibodies
Applications:	IHC
Recommended Dilution:	IHC-P (10 µg/ml)
Reactivity:	Gorilla, Human, Gibbon (Predicted: Monkey, Mouse, Rat, Dog, Hamster)
Host:	Rabbit
Isotype:	IgG
Clonality:	Polyclonal
Immunogen:	PLA2G3 antibody was raised against synthetic 16 amino acid peptide from internal region of human PLA2G3. Percent identity with other species by BLAST analysis: Human, Gorilla, Gibbon, Monkey (100%); Marmoset, Mouse, Rat, Dog, Hamster (94%); Elephant, Panda, Rabbit (88%); Bovine, Horse, Pig (81%).
Formulation:	PBS, 0.1% sodium azide.
Concentration:	lot specific
Purification:	Immunoaffinity Chromatography
Conjugation:	Unconjugated
Storage:	Store at -20°C as received.
Stability:	Stable for 12 months from date of receipt.
Gene Name:	phospholipase A2 group III
Database Link:	<a href="#">NP_056530</a> <a href="#">Entrez Gene 237625</a> <a href="#">MouseEntrez Gene 289733</a> <a href="#">RatEntrez Gene 486361</a> <a href="#">DogEntrez Gene 718321</a> <a href="#">MonkeyEntrez Gene 50487</a> <a href="#">Human Q9NZ20</a>
Synonyms:	GIII-SPLA2; sPLA2-III; SPLA2III
Note:	Specific for Human PLA2G3. BLAST analysis of the peptide immunogen showed no homology with other human proteins.
Protein Families:	Druggable Genome, Secreted Protein



[View online »](#)

**Protein Pathways:**

alpha-Linolenic acid metabolism, Arachidonic acid metabolism, Ether lipid metabolism, Fc epsilon RI signaling pathway, Glycerophospholipid metabolism, GnRH signaling pathway, Linoleic acid metabolism, Long-term depression, MAPK signaling pathway, Metabolic pathways, Vascular smooth muscle contraction, VEGF signaling pathway

**Product images:**

Anti-PLA2G3 antibody IHC of human Colon, Carcinoma. Immunohistochemistry of formalin-fixed, paraffin-embedded tissue after heat-induced antigen retrieval.