

Product datasheet for **TA317691**

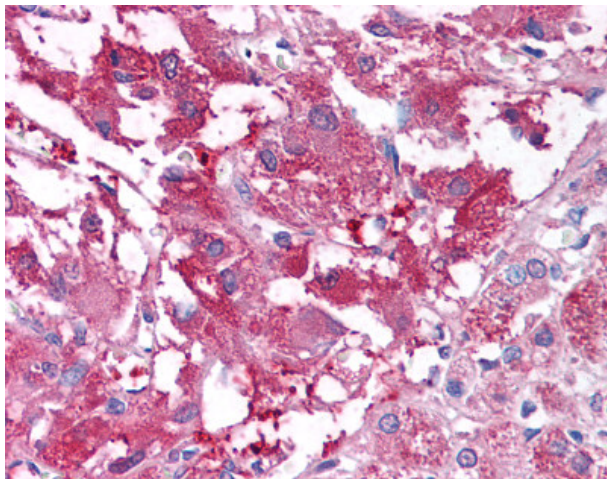
USP20 Rabbit Polyclonal Antibody

Product data:

Product Type:	Primary Antibodies
Applications:	IHC
Recommended Dilution:	IHC-P (10 µg/ml)
Reactivity:	Bat, Bovine, Chicken, Dog, Gorilla, Human, Monkey, Pig, Rabbit, Gibbon, Horse, Orang-Utan (Predicted: Mouse, Rat, Hamster)
Host:	Rabbit
Isotype:	IgG
Clonality:	Polyclonal
Immunogen:	VDU2 / USP20 antibody was raised against synthetic 15 amino acid peptide from internal region of human USP20. Percent identity with other species by BLAST analysis: Human, Gorilla, Orangutan, Gibbon, Monkey, Marmoset, Dog, Bat, Bovine, Elephant, Panda, Horse, Rabbit, Pig, Opossum, Turkey, Chicken, Platypus (100%); Mouse, Rat, Hamster (93%); Zebrafish, Stickleback (87%); Pufferfish (80%).
Formulation:	PBS, 0.1% sodium azide.
Concentration:	lot specific
Purification:	Immunoaffinity Chromatography
Conjugation:	Unconjugated
Storage:	Store at -20°C as received.
Stability:	Stable for 12 months from date of receipt.
Gene Name:	ubiquitin specific peptidase 20
Database Link:	NP_006667 Entrez Gene 74270 MouseEntrez Gene 311856 RatEntrez Gene 480696 DogEntrez Gene 716505 MonkeyEntrez Gene 10868 Human Q9Y2K6
Synonyms:	hVDU2; LSFR3A; VDU2
Note:	Specific for Human USP20. BLAST analysis of the peptide immunogen showed no homology with other human proteins.
Protein Families:	Druggable Genome, Protease



[View online »](#)

Product images:

Anti-USP20 antibody IHC of human adrenal medulla. Immunohistochemistry of formalin-fixed, paraffin-embedded tissue after heat-induced antigen retrieval.