

## Product datasheet for **TA317688**

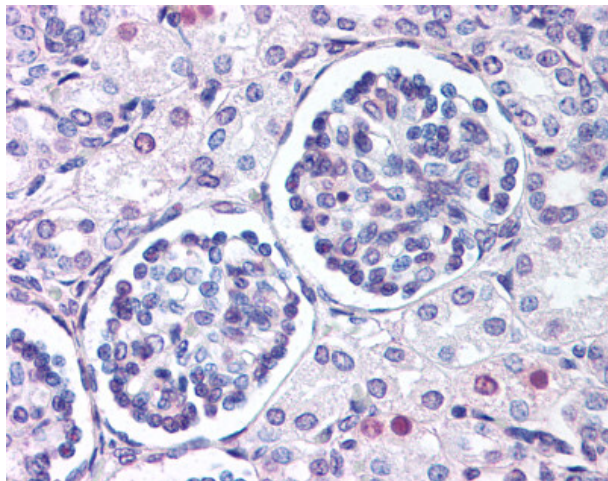
### WNT9B Rabbit Polyclonal Antibody

#### Product data:

Product Type:	Primary Antibodies
Applications:	IHC
Recommended Dilution:	IHC-P (10 µg/ml)
Reactivity:	Gorilla, Human, Gibbon (Predicted: Monkey, Bat, Bovine, Horse, Pig)
Host:	Rabbit
Isotype:	IgG
Clonality:	Polyclonal
Immunogen:	WNT9B / WNT15 antibody was raised against synthetic 15 amino acid peptide from internal region of human WNT9B. Percent identity with other species by BLAST analysis: Human, Gorilla, Gibbon, Marmoset (100%); Monkey, Panda, Bat, Bovine, Horse, Pig (93%); Mouse, Hamster, Dog (87%); Rat, Rabbit (80%).
Formulation:	PBS, 0.1% sodium azide.
Concentration:	lot specific
Purification:	Immunoaffinity Chromatography
Conjugation:	Unconjugated
Storage:	Store at -20°C as received.
Stability:	Stable for 12 months from date of receipt.
Gene Name:	Wnt family member 9B
Database Link:	<a href="#">NP_003387</a> <a href="#">Entrez Gene 716877 Monkey</a> <a href="#">Entrez Gene 7484 Human</a> <a href="#">O14905</a>
Synonyms:	WNT14B; WNT15
Note:	Specific for Human WNT9B. BLAST analysis of the peptide immunogen showed no homology with other human proteins.
Protein Families:	Secreted Protein, Transmembrane
Protein Pathways:	Basal cell carcinoma, Hedgehog signaling pathway, Melanogenesis, Pathways in cancer, Wnt signaling pathway



[View online »](#)

**Product images:**

Anti-WNT9B antibody IHC of human fetal kidney. Immunohistochemistry of formalin-fixed, paraffin-embedded tissue after heat-induced antigen retrieval.