

Product datasheet for **TA317686**

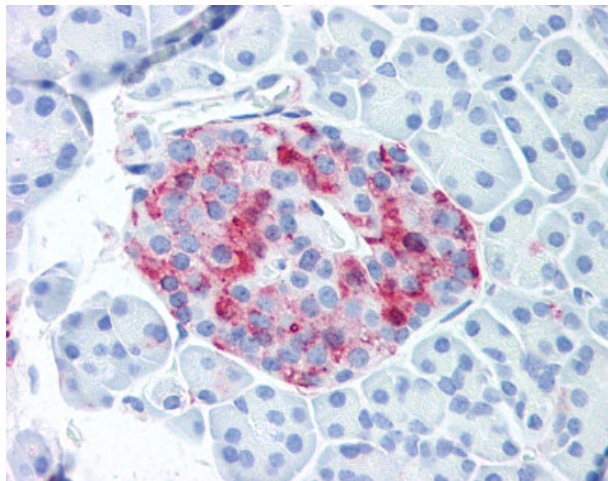
WNT10A Rabbit Polyclonal Antibody

Product data:

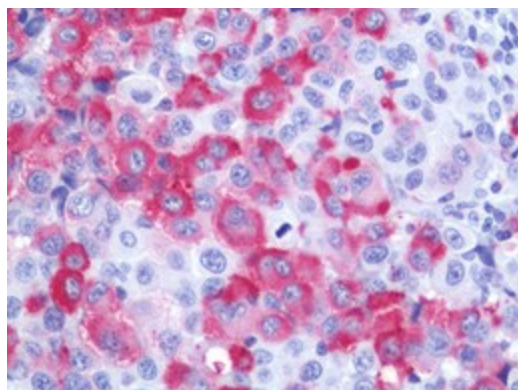
Product Type:	Primary Antibodies
Applications:	IHC
Recommended Dilution:	IHC-P (5 µg/ml)
Reactivity:	Bovine, Dog, Gorilla, Human, Monkey, Mouse, Rabbit, Rat, Gibbon, Hamster (Predicted: Bat)
Host:	Rabbit
Isotype:	IgG
Clonality:	Polyclonal
Immunogen:	WNT10A antibody was raised against synthetic 18 amino acid peptide from internal region of human WNT10A. Percent identity with other species by BLAST analysis: Human, Gorilla, Gibbon, Monkey, Marmoset, Mouse, Rat, Hamster, Panda, Bovine, Dog, Rabbit (100%); Elephant, Bat (94%); Chicken (89%); Opossum, Turkey, Lizard, Xenopus, Stickleback, Pufferfish (83%).
Formulation:	PBS, 0.1% sodium azide.
Purification:	Immunoaffinity Chromatography
Conjugation:	Unconjugated
Storage:	Store at -20°C as received.
Stability:	Stable for 12 months from date of receipt.
Gene Name:	Wnt family member 10A
Database Link:	NP_079492 Entrez Gene 22409 Mouse Entrez Gene 316527 Rat Entrez Gene 488528 Dog Entrez Gene 700692 Monkey Entrez Gene 80326 Human Q9GZT5
Synonyms:	OODD; SSPS; STHAG4
Note:	Specific for Human WNT10A. BLAST analysis of the peptide immunogen showed no homology with other human proteins.
Protein Families:	Secreted Protein, Transmembrane
Protein Pathways:	Basal cell carcinoma, Hedgehog signaling pathway, Melanogenesis, Pathways in cancer, Wnt signaling pathway



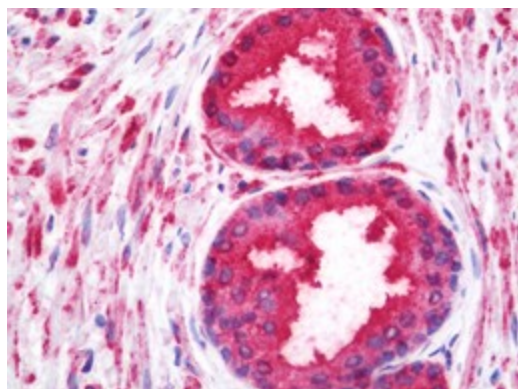
[View online »](#)

Product images:

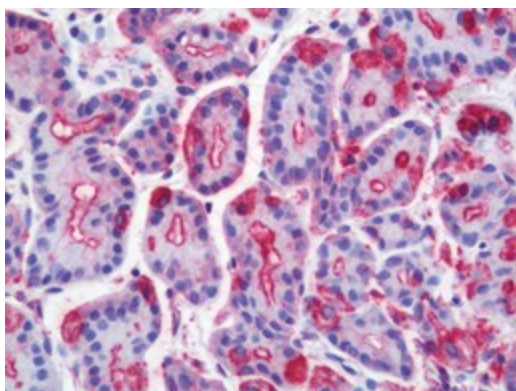
Anti-WNT10A antibody IHC of human pancreatic islet. Immunohistochemistry of formalin-fixed, paraffin-embedded tissue after heat-induced antigen retrieval.



Human Melanoma (Lymph Node): Formalin-Fixed, Paraffin-Embedded (FFPE)



Human Prostate: Formalin-Fixed, Paraffin-Embedded (FFPE)



Human Stomach: Formalin-Fixed, Paraffin-Embedded (FFPE)