

Product datasheet for **TA317679**

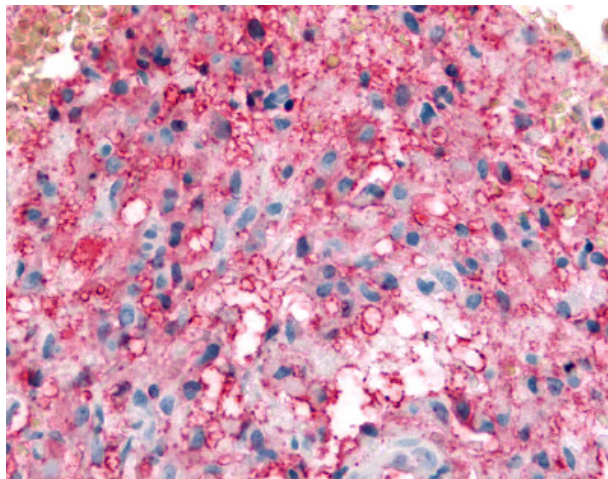
KCNMB3 Rabbit Polyclonal Antibody

Product data:

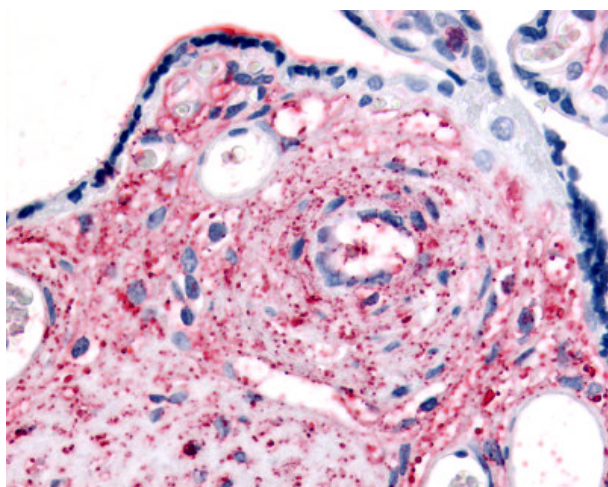
Product Type:	Primary Antibodies
Applications:	IHC
Recommended Dilution:	IHC-P (10 µg/ml)
Reactivity:	Gorilla, Human
Host:	Rabbit
Isotype:	IgG
Clonality:	Polyclonal
Immunogen:	KCNMB3 antibody was raised against synthetic 15 amino acid peptide from C-terminus of human KCNMB3. Percent identity with other species by BLAST analysis: Human, Gorilla (100%); Gibbon, Monkey (87%); Marmoset (80%).
Formulation:	PBS, 0.1% sodium azide.
Concentration:	lot specific
Purification:	Immunoaffinity Chromatography
Conjugation:	Unconjugated
Storage:	Store at -20°C as received.
Stability:	Stable for 12 months from date of receipt.
Gene Name:	potassium calcium-activated channel subfamily M regulatory beta subunit 3
Database Link:	NP_741981 Entrez Gene 27094 Human Q9NPA1
Synonyms:	BKBETA3; HBETA3; K(VCA)BETA-3; KCNMB2; KCNMBL; SLO-BETA-3; SLOBETA3
Note:	Specific for Human KCNMB3. BLAST analysis of the peptide immunogen showed no homology with other human proteins.
Protein Families:	Druggable Genome, Ion Channels: Other, Transmembrane
Protein Pathways:	Vascular smooth muscle contraction



[View online »](#)

Product images:

Anti-KCNMB3 antibody IHC of human Brain, Glioblastoma. Immunohistochemistry of formalin-fixed, paraffin-embedded tissue after heat-induced antigen retrieval.



Anti-KCNMB3 antibody IHC of human placenta. Immunohistochemistry of formalin-fixed, paraffin-embedded tissue after heat-induced antigen retrieval.