

Product datasheet for **TA317676**

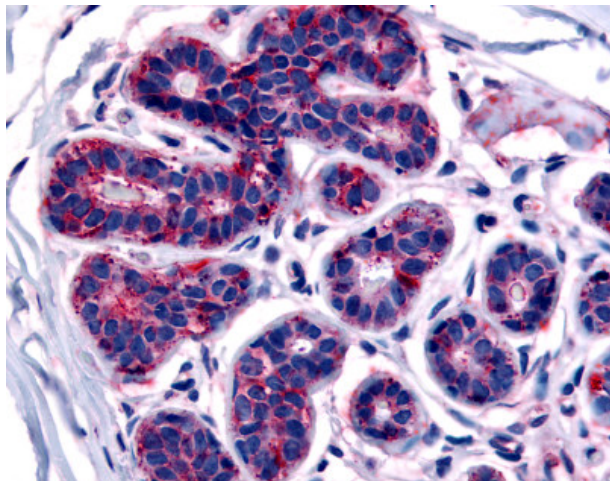
TRIB3 Rabbit Polyclonal Antibody

Product data:

Product Type:	Primary Antibodies
Applications:	IHC
Recommended Dilution:	IHC-P (5 µg/ml)
Reactivity:	Gorilla, Human (Predicted: Monkey)
Host:	Rabbit
Isotype:	IgG
Clonality:	Polyclonal
Immunogen:	TRB3 / TRIB3 antibody was raised against synthetic 16 amino acid peptide from near N-terminus of human TRIB3. Percent identity with other species by BLAST analysis: Human, Gorilla (100%); Gibbon, Monkey, Marmoset (94%); Mouse, Rat (88%); Elephant, Horse (81%).
Formulation:	PBS, 0.1% sodium azide.
Concentration:	lot specific
Purification:	Immunoaffinity Chromatography
Conjugation:	Unconjugated
Storage:	Store at -20°C as received.
Stability:	Stable for 12 months from date of receipt.
Gene Name:	tribbles pseudokinase 3
Database Link:	NP_066981 Entrez Gene 714636 Monkey Entrez Gene 57761 Human Q96RU7
Synonyms:	C20orf97; NIPK; SINK; SKIP3; TRB3
Note:	Specific for Human TRIB3. BLAST analysis of the peptide immunogen showed no homology with other human proteins, except MAP4K3 (50%).
Protein Families:	Druggable Genome, Protein Kinase, Transcription Factors



[View online »](#)

Product images:

Anti-TRIB3 antibody IHC of human breast. Immunohistochemistry of formalin-fixed, paraffin-embedded tissue after heat-induced antigen retrieval.