

## Product datasheet for **TA317675**

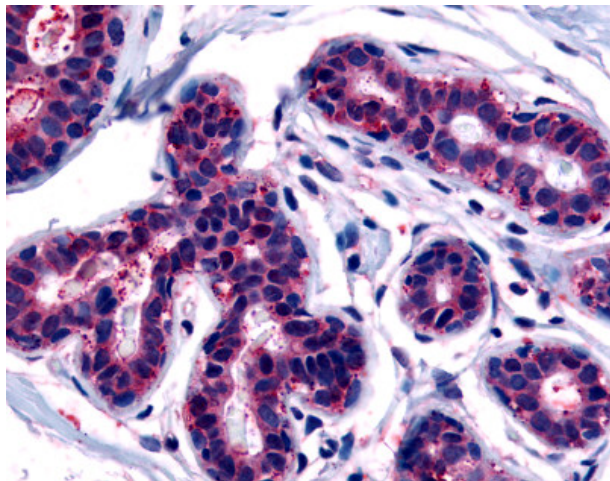
### TRIB3 Rabbit Polyclonal Antibody

#### Product data:

Product Type:	Primary Antibodies
Applications:	IHC
Recommended Dilution:	IHC-P (2 µg/ml)
Reactivity:	Human, Gibbon (Predicted: Monkey, Bovine, Dog, Pig, Rabbit)
Host:	Rabbit
Isotype:	IgG
Clonality:	Polyclonal
Immunogen:	TRB3 / TRIB3 antibody was raised against synthetic 16 amino acid peptide from near C-terminus of human TRIB3. Percent identity with other species by BLAST analysis: Human, Gibbon, Monkey (100%); Gorilla, Marmoset, Panda, Dog, Bovine, Rabbit, Pig (94%); Elephant (88%); Mouse, Horse, Opossum (81%).
Formulation:	PBS, 0.1% sodium azide.
Concentration:	lot specific
Purification:	Immunoaffinity Chromatography
Conjugation:	Unconjugated
Storage:	Store at -20°C as received.
Stability:	Stable for 12 months from date of receipt.
Gene Name:	tribbles pseudokinase 3
Database Link:	<a href="#">NP_066981</a> <a href="#">Entrez Gene 485819 Dog</a> <a href="#">Entrez Gene 714636 Monkey</a> <a href="#">Entrez Gene 57761 Human</a> <a href="#">Q96RU7</a>
Synonyms:	C20orf97; NIPK; SINK; SKIP3; TRB3
Note:	Specific for Human TRIB3. BLAST analysis of the peptide immunogen showed no homology with other human proteins, except TRIB2 (75%).
Protein Families:	Druggable Genome, Protein Kinase, Transcription Factors



[View online »](#)

**Product images:**

Anti-TRIB3 antibody IHC of human breast. Immunohistochemistry of formalin-fixed, paraffin-embedded tissue after heat-induced antigen retrieval.