

Product datasheet for **TA317674**

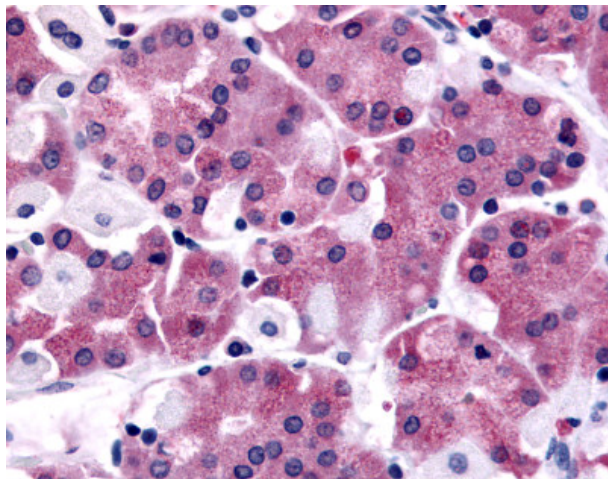
xCT (SLC7A11) Rabbit Polyclonal Antibody

Product data:

Product Type:	Primary Antibodies
Applications:	IHC
Recommended Dilution:	IHC-P (8 µg/ml)
Reactivity:	Gorilla, Human, Gibbon, Orang-Utan (Predicted: Monkey)
Host:	Rabbit
Isotype:	IgG
Clonality:	Polyclonal
Immunogen:	SLC7A11 / XCT antibody was raised against synthetic 19 amino acid peptide from near N-terminus of human SLC7A11. Percent identity with other species by BLAST analysis: Human, Gorilla, Orangutan, Gibbon, Monkey (100%); Marmoset (95%); Sheep, Panda, Rabbit (84%).
Formulation:	PBS, 0.1% sodium azide.
Concentration:	lot specific
Purification:	Immunoaffinity Chromatography
Conjugation:	Unconjugated
Storage:	Store at -20°C as received.
Stability:	Stable for 12 months from date of receipt.
Gene Name:	solute carrier family 7 member 11
Database Link:	NP_055146 Entrez Gene 696516 Monkey Entrez Gene 23657 Human Q9UPY5
Synonyms:	CCBR1; xCT
Note:	Specific for Human SLC7A11. BLAST analysis of the peptide immunogen showed no homology with other human proteins.
Protein Families:	Druggable Genome, Transmembrane



[View online »](#)

Product images:

Anti-SLC7A11 antibody IHC of human stomach. Immunohistochemistry of formalin-fixed, paraffin-embedded tissue after heat-induced antigen retrieval.