

Product datasheet for **TA317672**

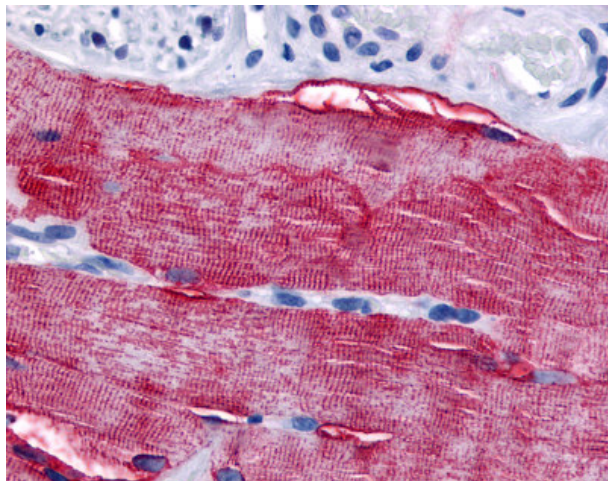
GRK5 Rabbit Polyclonal Antibody

Product data:

Product Type:	Primary Antibodies
Applications:	IHC
Recommended Dilution:	IHC-P (3 µg/ml)
Reactivity:	Gorilla, Human, Gibbon, Orang-Utan (Predicted: Monkey, Mouse, Rat, Bat, Dog, Horse)
Host:	Rabbit
Isotype:	IgG
Clonality:	Polyclonal
Immunogen:	GRK5 antibody was raised against synthetic 15 amino acid peptide from internal region of human GRK5. Percent identity with other species by BLAST analysis: Human, Gorilla, Orangutan, Gibbon (100%); Marmoset, Mouse, Rat, Panda, Dog, Bat, Horse (93%); Elephant, Bovine, Pig (87%).
Formulation:	PBS, 0.1% sodium azide.
Concentration:	lot specific
Purification:	Immunoaffinity Chromatography
Conjugation:	Unconjugated
Storage:	Store at -20°C as received.
Stability:	Stable for 12 months from date of receipt.
Gene Name:	G protein-coupled receptor kinase 5
Database Link:	NP_005299 Entrez Gene 14773 Mouse Entrez Gene 59075 Rat Entrez Gene 486915 Dog Entrez Gene 100427251 Monkey Entrez Gene 2869 Human P34947
Synonyms:	GPRK5
Note:	Specific for Human GRK5. BLAST analysis of the peptide immunogen showed no homology with other human proteins.
Protein Families:	Druggable Genome, Protein Kinase
Protein Pathways:	Chemokine signaling pathway, Endocytosis



[View online »](#)

Product images:

Anti-GRK5 antibody IHC of human skeletal muscle. Immunohistochemistry of formalin-fixed, paraffin-embedded tissue after heat-induced antigen retrieval.