

Product datasheet for **TA317670**

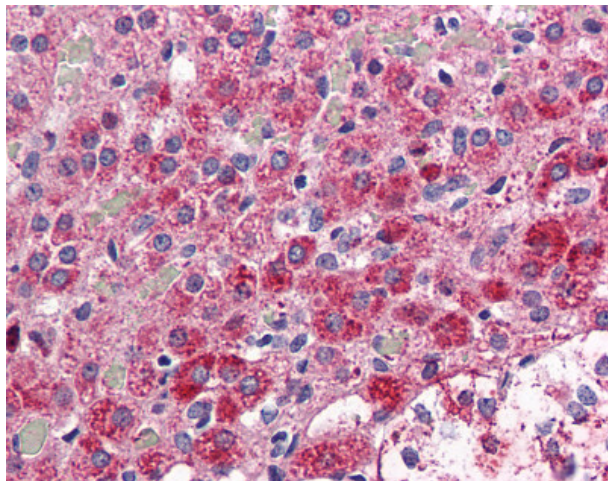
CCKAR Rabbit Polyclonal Antibody

Product data:

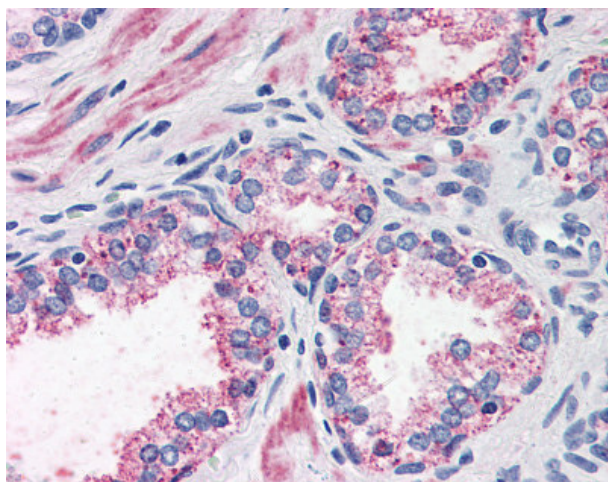
Product Type:	Primary Antibodies
Applications:	IHC
Recommended Dilution:	IHC-P (5 - 10 µg/ml)
Reactivity:	Dog, Gorilla, Human, Monkey, Gibbon (Predicted: Bovine, Horse, Rabbit)
Host:	Rabbit
Isotype:	IgG
Clonality:	Polyclonal
Immunogen:	CCKAR / CCK1R antibody was raised against synthetic 16 amino acid peptide from internal region of human CCKAR. Percent identity with other species by BLAST analysis: Human, Gorilla, Gibbon, Monkey, Marmoset, Dog, Panda (100%); Bovine, Elephant, Horse, Rabbit (94%); Bat, Opossum, Guinea pig (88%); Mouse, Rat, Hamster (81%).
Formulation:	PBS, 0.1% sodium azide.
Concentration:	lot specific
Purification:	Immunoaffinity Chromatography
Conjugation:	Unconjugated
Storage:	Store at -20°C as received.
Stability:	Stable for 12 months from date of receipt.
Gene Name:	cholecystokinin A receptor
Database Link:	NP_000721 Entrez Gene 488846 Dog Entrez Gene 694742 Monkey Entrez Gene 886 Human P32238
Synonyms:	CCK-A; CCK1-R; CCK1R; CCKRA
Note:	Specific for Human CCKAR. BLAST analysis of the peptide immunogen showed no homology with other human proteins.
Protein Families:	Druggable Genome, Transmembrane
Protein Pathways:	Calcium signaling pathway, Neuroactive ligand-receptor interaction



[View online »](#)

Product images:

Anti-CCKAR antibody IHC of human adrenal. Immunohistochemistry of formalin-fixed, paraffin-embedded tissue after heat-induced antigen retrieval.



Anti-CCKAR antibody IHC of human prostate. Immunohistochemistry of formalin-fixed, paraffin-embedded tissue after heat-induced antigen retrieval.