

Product datasheet for **TA317669**

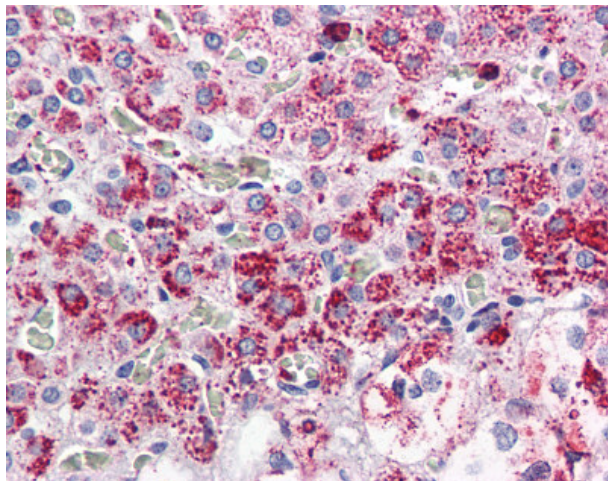
CCKAR Rabbit Polyclonal Antibody

Product data:

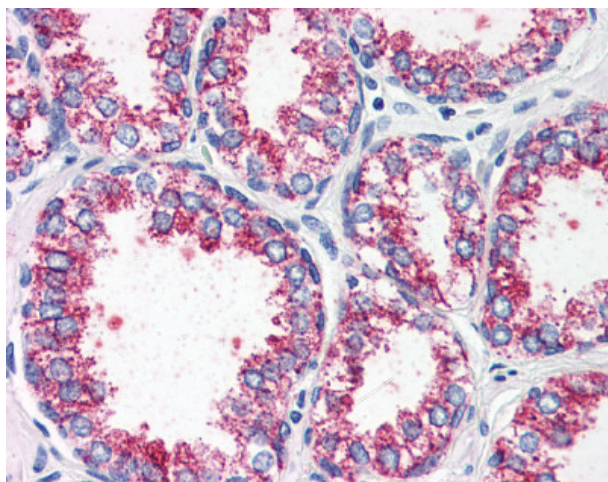
| | |
|-----------------------|--|
| Product Type: | Primary Antibodies |
| Applications: | IHC |
| Recommended Dilution: | IHC-P (10 µg/ml) |
| Reactivity: | Gorilla, Human, Gibbon (Predicted: Monkey) |
| Host: | Rabbit |
| Isotype: | IgG |
| Clonality: | Polyclonal |
| Immunogen: | CCKAR / CCK1R antibody was raised against synthetic 20 amino acid peptide from internal region of human CCKAR. Percent identity with other species by BLAST analysis: Human, Gorilla, Gibbon, Monkey (100%); Marmoset (90%); Elephant (85%); Rat, Panda, Guinea pig (80%). |
| Formulation: | PBS, 0.1% sodium azide. |
| Concentration: | lot specific |
| Purification: | Immunoaffinity Chromatography |
| Conjugation: | Unconjugated |
| Storage: | Store at -20°C as received. |
| Stability: | Stable for 12 months from date of receipt. |
| Gene Name: | cholecystokinin A receptor |
| Database Link: | NP_000721 Entrez Gene 694742 Monkey Entrez Gene 886 Human P32238 |
| Synonyms: | CCK-A; CCK1-R; CCK1R; CCKRA |
| Note: | Specific for Human CCKAR. BLAST analysis of the peptide immunogen showed no homology with other human proteins. |
| Protein Families: | Druggable Genome, Transmembrane |
| Protein Pathways: | Calcium signaling pathway, Neuroactive ligand-receptor interaction |



[View online »](#)

Product images:

Anti-CCKAR antibody IHC of human adrenal. Immunohistochemistry of formalin-fixed, paraffin-embedded tissue after heat-induced antigen retrieval.



Anti-CCKAR antibody IHC of human prostate. Immunohistochemistry of formalin-fixed, paraffin-embedded tissue after heat-induced antigen retrieval.