

Product datasheet for **TA317665**

alpha 1b Adrenergic Receptor (ADRA1B) Rabbit Polyclonal Antibody

Product data:

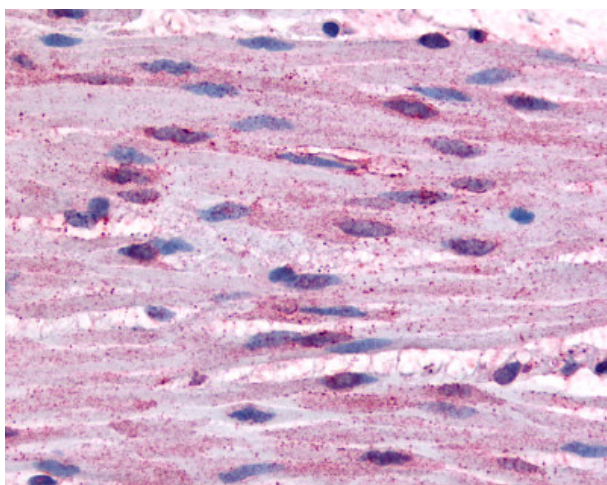
Product Type:	Primary Antibodies
Applications:	IHC
Recommended Dilution:	IHC-P (10 µg/ml)
Reactivity:	Bovine, Dog, Gorilla, Human, Monkey, Mouse, Pig, Rat, Gibbon, Hamster, Horse (Predicted: Bat)
Host:	Rabbit
Isotype:	IgG
Clonality:	Polyclonal
Immunogen:	ADRA1B antibody was raised against synthetic 16 amino acid peptide from 3rd cytoplasmic domain of human ADRA1B. Percent identity with other species by BLAST analysis: Human, Gorilla, Gibbon, Monkey, Marmoset, Mouse, Rat, Bovine, Dog, Hamster, Elephant, Panda, Horse, Pig, Opossum (100%); Bat (94%); Turkey, Chicken (88%); Platypus (81%).
Formulation:	PBS, 0.1% sodium azide.
Concentration:	lot specific
Purification:	Immunoaffinity Chromatography
Conjugation:	Unconjugated
Storage:	Store at -20°C as received.
Stability:	Stable for 12 months from date of receipt.
Gene Name:	adrenoceptor alpha 1B
Database Link:	NP_000670 Entrez Gene 11548 Mouse Entrez Gene 24173 Rat Entrez Gene 403962 Dog Entrez Gene 695106 Monkey Entrez Gene 147 Human P35368
Synonyms:	ADRA1; ALPHA1BAR
Note:	Specific for Human ADRA1B. BLAST analysis of the peptide immunogen showed no homology with other human proteins.
Protein Families:	Druggable Genome, GPCR, Transmembrane



[View online »](#)

Protein Pathways: Calcium signaling pathway, Neuroactive ligand-receptor interaction, Vascular smooth muscle contraction

Product images:



Anti-ADRA1B antibody IHC of human smooth muscle cells. Immunohistochemistry of formalin-fixed, paraffin-embedded tissue after heat-induced antigen retrieval.