

## Product datasheet for **TA317662**

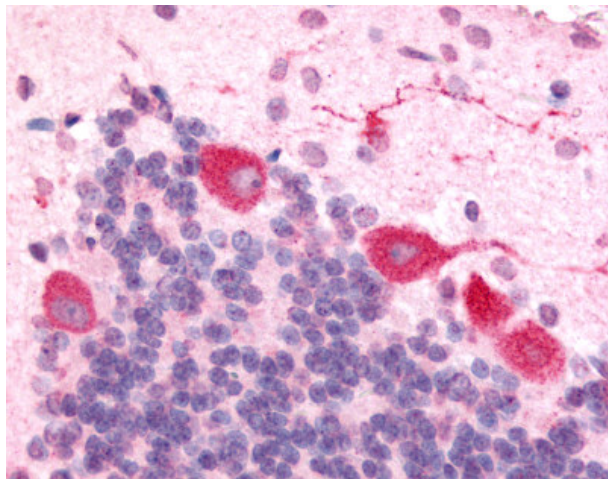
### Orexin Receptor 1 (HCRTR1) Rabbit Polyclonal Antibody

#### Product data:

Product Type:	Primary Antibodies
Applications:	IHC
Recommended Dilution:	IHC-P (6.8 µg/ml)
Reactivity:	Gorilla, Human, Monkey, Rat, Gibbon (Predicted: Dog, Pig, Rabbit)
Host:	Rabbit
Isotype:	IgG
Clonality:	Polyclonal
Immunogen:	OX1R / Orexin Receptor 1 antibody was raised against synthetic 15 amino acid peptide from 3rd cytoplasmic domain of human HCRTR1 / Orexin Receptor 1. Percent identity with other species by BLAST analysis: Human, Gorilla, Gibbon, Monkey, Marmoset (100%); Dog, Rabbit, Pig (93%); Mouse, Rat, Hamster, Elephant, Panda, Bovine, Bat (87%).
Formulation:	PBS, 0.1% sodium azide.
Concentration:	lot specific
Purification:	Immunoaffinity Chromatography
Conjugation:	Unconjugated
Storage:	Store at -20°C as received.
Stability:	Stable for 12 months from date of receipt.
Gene Name:	hypocretin receptor 1
Database Link:	<a href="#">NP_001516</a> <a href="#">Entrez Gene 25593 Rat</a> <a href="#">Entrez Gene 100855896 Dog</a> <a href="#">Entrez Gene 705914 Monkey</a> <a href="#">Entrez Gene 3061 Human</a> <a href="#">O43613</a>
Synonyms:	OX1R
Note:	Specific for Human HCRTR1 / Orexin Receptor 1. BLAST analysis of the peptide immunogen showed no homology with other human proteins.
Protein Families:	Druggable Genome, ES Cell Differentiation/IPS, GPCR, Transmembrane
Protein Pathways:	Neuroactive ligand-receptor interaction



[View online »](#)

**Product images:**

Anti-HCRT1 / Orexin Receptor 1 antibody IHC of rat brain, Purkinje neurons. Immunohistochemistry of formalin-fixed, paraffin-embedded tissue after heat-induced antigen retrieval.