

Product datasheet for **TA317661**

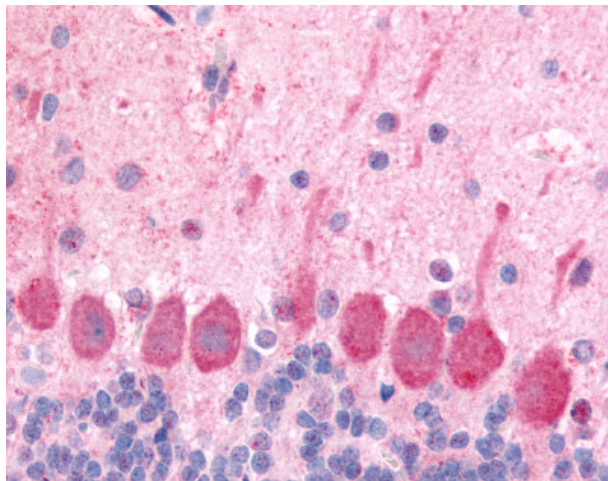
Orexin Receptor 1 (HCRTR1) Rabbit Polyclonal Antibody

Product data:

Product Type:	Primary Antibodies
Applications:	IHC
Recommended Dilution:	IHC-P (3.8 µg/ml)
Reactivity:	Bovine, Gorilla, Human, Pig, Rabbit, Rat, Gibbon (Predicted: Monkey, Bat, Dog, Horse)
Host:	Rabbit
Isotype:	IgG
Clonality:	Polyclonal
Immunogen:	OX1R / Orexin Receptor 1 antibody was raised against synthetic 14 amino acid peptide from 2nd extracellular domain of human HCRTR1 / Orexin Receptor 1. Percent identity with other species by BLAST analysis: Human, Gorilla, Gibbon, Monkey, Bovine, Rabbit, Pig, Platypus (100%); Marmoset, Rat, Elephant, Panda, Dog, Bat, Horse (93%); Mouse, Hamster (86%).
Formulation:	PBS, 0.1% sodium azide.
Concentration:	lot specific
Purification:	Immunoaffinity Chromatography
Conjugation:	Unconjugated
Storage:	Store at -20°C as received.
Stability:	Stable for 12 months from date of receipt.
Gene Name:	hypocretin receptor 1
Database Link:	NP_001516 Entrez Gene 25593 Rat Entrez Gene 100855896 Dog Entrez Gene 705914 Monkey Entrez Gene 3061 Human O43613
Synonyms:	OX1R
Note:	Specific for Human HCRTR1 / Orexin Receptor 1. BLAST analysis of the peptide immunogen showed no homology with other human proteins, except HCRTR2 (64%).
Protein Families:	Druggable Genome, ES Cell Differentiation/IPS, GPCR, Transmembrane
Protein Pathways:	Neuroactive ligand-receptor interaction



[View online »](#)

Product images:

Anti-HCRTR1 / Orexin Receptor 1 antibody IHC of rat brain, Purkinje neurons.
Immunohistochemistry of formalin-fixed, paraffin-embedded tissue after heat-induced antigen retrieval.