

Product datasheet for **TA317657**

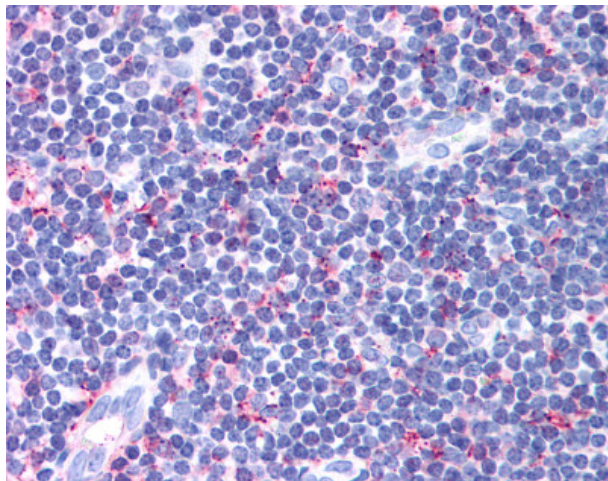
CCR4 Rabbit Polyclonal Antibody

Product data:

| | |
|-----------------------|---|
| Product Type: | Primary Antibodies |
| Applications: | IHC |
| Recommended Dilution: | IHC-P (10 µg/ml) |
| Reactivity: | Gorilla, Human, Monkey, Gibbon |
| Host: | Rabbit |
| Isotype: | IgG |
| Clonality: | Polyclonal |
| Immunogen: | CCR4 antibody was raised against synthetic 18 amino acid peptide from 2nd extracellular domain of human CCR4. Percent identity with other species by BLAST analysis: Human, Gorilla, Gibbon, Monkey, Marmoset (100%); Ferret, Elephant, Panda (94%); Dog, Bovine, Bat, Hamster (89%); Mouse, Rat (83%). |
| Formulation: | PBS, 0.1% sodium azide. |
| Concentration: | lot specific |
| Purification: | Immunoaffinity Chromatography |
| Conjugation: | Unconjugated |
| Storage: | Store at -20°C as received. |
| Stability: | Stable for 12 months from date of receipt. |
| Gene Name: | C-C motif chemokine receptor 4 |
| Database Link: | NP_005499 Entrez Gene 705457 Monkey Entrez Gene 1233 Human P51679 |
| Synonyms: | CC-CKR-4; CD194; ChemR13; CKR4; CMKBR4; HGCN:14099; K5-5 |
| Note: | Specific for Human CCR4. BLAST analysis of the peptide immunogen showed no homology with other human proteins. |
| Protein Families: | Druggable Genome, GPCR, Transmembrane |
| Protein Pathways: | Chemokine signaling pathway, Cytokine-cytokine receptor interaction |



[View online »](#)

Product images:

Anti-CCR4 antibody IHC of human tonsil.
Immunohistochemistry of formalin-fixed,
paraffin-embedded tissue after heat-induced
antigen retrieval.