

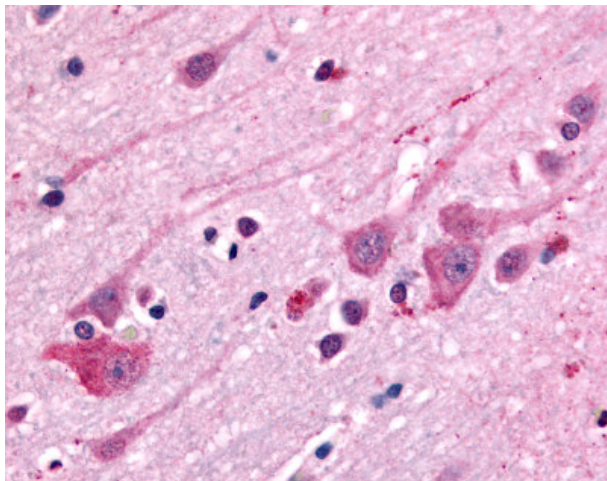
Product datasheet for **TA317650**

Dopamine Receptor D1 (DRD1) Rabbit Polyclonal Antibody

Product data:

Product Type:	Primary Antibodies
Applications:	IHC
Recommended Dilution:	IHC-P (10 µg/ml)
Reactivity:	Gorilla, Human (Predicted: Monkey)
Host:	Rabbit
Isotype:	IgG
Clonality:	Polyclonal
Immunogen:	DRD1 / Dopamine Receptor D1 antibody was raised against synthetic 20 amino acid peptide from 2nd extracellular domain of human DRD1. Percent identity with other species by BLAST analysis: Human, Gorilla, Monkey (100%); Gibbon, Marmoset (95%); Elephant (90%); Dog, Rabbit (85%); Horse (80%).
Formulation:	PBS, 0.1% sodium azide.
Purification:	Immunoaffinity Chromatography
Conjugation:	Unconjugated
Storage:	Store at -20°C as received.
Stability:	Stable for 12 months from date of receipt.
Gene Name:	dopamine receptor D1
Database Link:	NP_000785 Entrez Gene 697796 Monkey Entrez Gene 1812 Human P21728
Synonyms:	DADR; DRD1A
Note:	Specific for Human DRD1. BLAST analysis of the peptide immunogen showed no homology with other human proteins.
Protein Families:	Druggable Genome, GPCR, Transmembrane
Protein Pathways:	Calcium signaling pathway, Gap junction, Neuroactive ligand-receptor interaction


[View online »](#)

Product images:

Anti-DRD1 antibody IHC of human brain.
Immunohistochemistry of formalin-fixed,
paraffin-embedded tissue after heat-induced
antigen retrieval.