

Product datasheet for **TA317647**

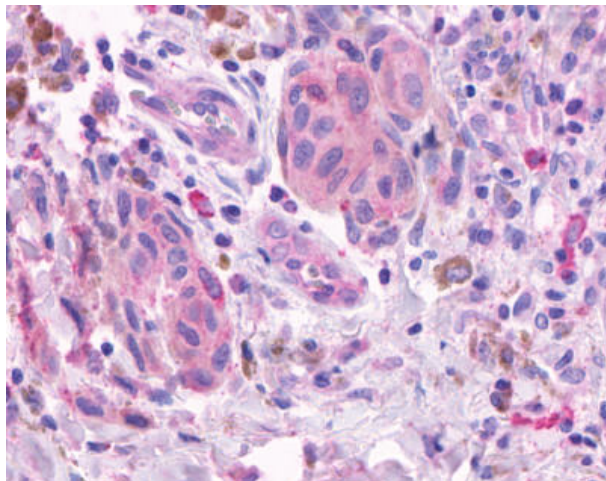
Olfactory Receptor OR2A4 (OR2A4) Rabbit Polyclonal Antibody

Product data:

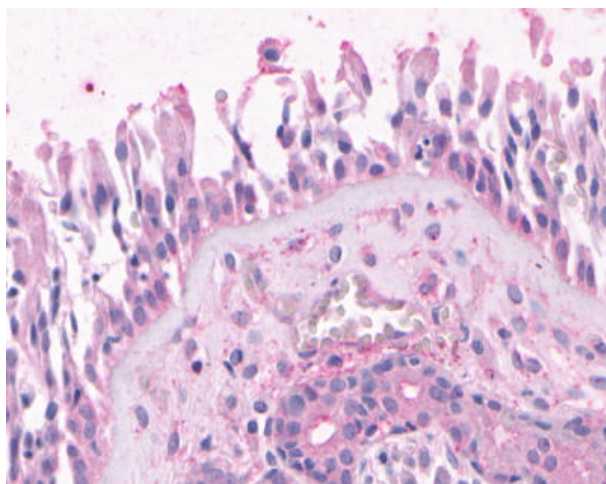
Product Type:	Primary Antibodies
Applications:	IHC
Recommended Dilution:	IHC-P (16 µg/ml)
Reactivity:	Human
Host:	Rabbit
Isotype:	IgG
Clonality:	Polyclonal
Immunogen:	OR2A4 antibody was raised against synthetic 18 amino acid peptide from 3rd cytoplasmic domain of human OR2A4. Percent identity with other species by BLAST analysis: Human (100%).
Formulation:	PBS, 0.1% sodium azide.
Concentration:	lot specific
Purification:	Immunoaffinity Chromatography
Conjugation:	Unconjugated
Storage:	Store at -20°C as received.
Stability:	Stable for 12 months from date of receipt.
Gene Name:	olfactory receptor family 2 subfamily A member 4
Database Link:	NP_112170 Entrez Gene 79541 Human O95047
Synonyms:	OR2A10
Note:	Specific for Human OR2A4. BLAST analysis of the peptide immunogen showed no homology with other human proteins, except OR2A1 (72%), OR2A14 (72%), OR2A5 (72%), OR2B2 (72%), OR5V1 (67%), OR2F1 (67%), OR2F2 (67%).
Protein Families:	Druggable Genome, Transmembrane
Protein Pathways:	Olfactory transduction



[View online »](#)

Product images:

Anti-OR2A4 antibody IHC of human Skin, Melanoma. Immunohistochemistry of formalin-fixed, paraffin-embedded tissue after heat-induced antigen retrieval.



Anti-OR2A4 antibody IHC of human nasal mucosa, respiratory epithelium. Immunohistochemistry of formalin-fixed, paraffin-embedded tissue after heat-induced antigen retrieval.