

## Product datasheet for **TA317644**

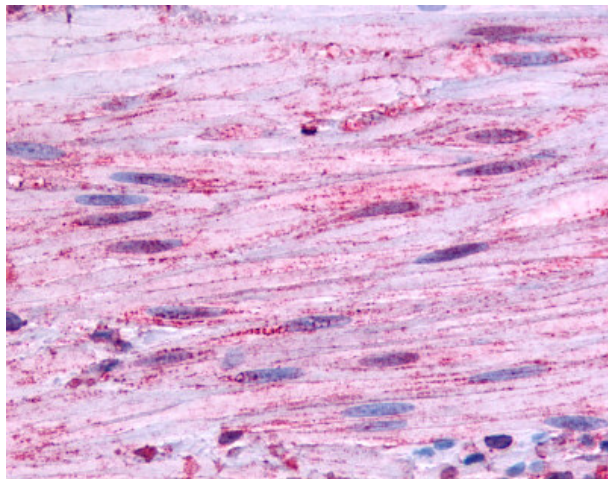
### **BDKRB1 Rabbit Polyclonal Antibody**

#### **Product data:**

<b>Product Type:</b>	Primary Antibodies
<b>Applications:</b>	IHC
<b>Recommended Dilution:</b>	IHC-P (20 µg/ml)
<b>Reactivity:</b>	Gorilla, Human, Monkey
<b>Host:</b>	Rabbit
<b>Isotype:</b>	IgG
<b>Clonality:</b>	Polyclonal
<b>Immunogen:</b>	B1R / BDKRB1 antibody was raised against synthetic 18 amino acid peptide from 2nd extracellular domain of human BDKRB1. Percent identity with other species by BLAST analysis: Human, Gorilla, Monkey (100%); Gibbon (94%); Rat, Hamster (89%); Mouse, Rabbit, Horse (83%).
<b>Formulation:</b>	PBS, 0.1% sodium azide.
<b>Purification:</b>	Immunoaffinity Chromatography
<b>Conjugation:</b>	Unconjugated
<b>Storage:</b>	Store at -20°C as received.
<b>Stability:</b>	Stable for 12 months from date of receipt.
<b>Gene Name:</b>	bradykinin receptor B1
<b>Database Link:</b>	<a href="#">NP_000701</a> <a href="#">Entrez Gene 712251 Monkey</a> <a href="#">Entrez Gene 623 Human</a> <a href="#">P46663</a>
<b>Synonyms:</b>	B1BKR; B1R; BDKRB2; BKB1R; BKR1; BRADYB1
<b>Note:</b>	Specific for Human BDKRB1. BLAST analysis of the peptide immunogen showed no homology with other human proteins.
<b>Protein Families:</b>	Druggable Genome, GPCR, Transmembrane
<b>Protein Pathways:</b>	Calcium signaling pathway, Complement and coagulation cascades, Neuroactive ligand-receptor interaction, Regulation of actin cytoskeleton



[View online »](#)

**Product images:**

Anti-BDKRB1 antibody IHC of human smooth muscle. Immunohistochemistry of formalin-fixed, paraffin-embedded tissue after heat-induced antigen retrieval.