

## Product datasheet for **TA317643**

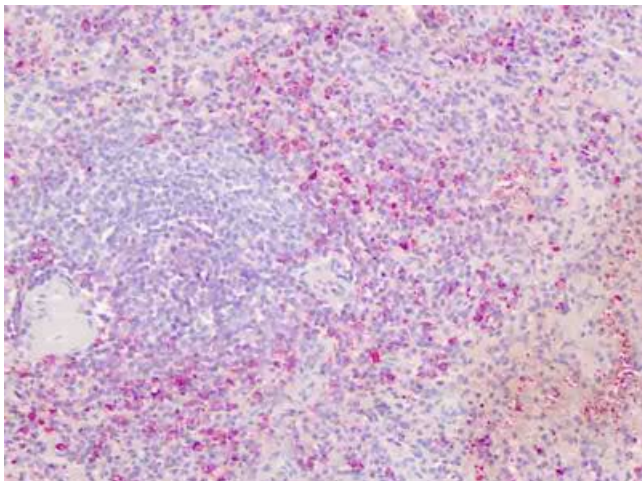
### CCR4 Rabbit Polyclonal Antibody

#### Product data:

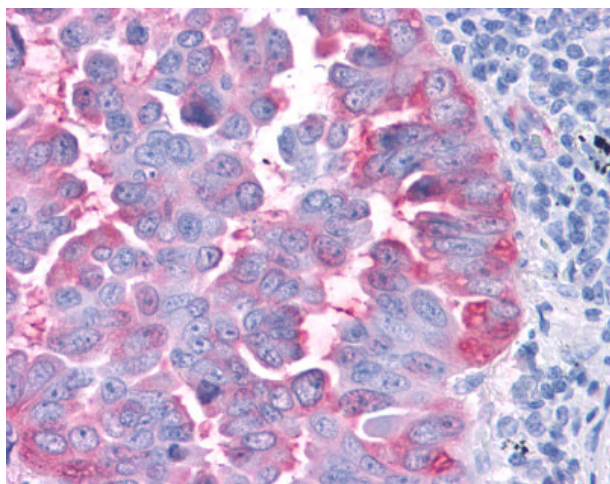
Product Type:	Primary Antibodies
Applications:	IHC
Recommended Dilution:	IHC-P (2 - 3 µg/ml)
Reactivity:	Gorilla, Human, Gibbon (Predicted: Monkey, Dog)
Host:	Rabbit
Isotype:	IgG
Clonality:	Polyclonal
Immunogen:	CCR4 antibody was raised against synthetic 18 amino acid peptide from C-terminus of human CCR4. Percent identity with other species by BLAST analysis: Human, Gorilla, Gibbon, Monkey (100%); Marmoset, Panda, Dog (94%); Hamster, Elephant, Bovine, Horse (89%); Bat, Rabbit, Opossum (83%).
Formulation:	PBS, 0.1% sodium azide.
Concentration:	lot specific
Purification:	Immunoaffinity Chromatography
Conjugation:	Unconjugated
Storage:	Store at -20°C as received.
Stability:	Stable for 12 months from date of receipt.
Gene Name:	C-C motif chemokine receptor 4
Database Link:	<a href="#">NP_005499</a> <a href="#">Entrez Gene 403541 Dog</a> <a href="#">Entrez Gene 705457 Monkey</a> <a href="#">Entrez Gene 1233 Human</a> <a href="#">P51679</a>
Synonyms:	CC-CKR-4; CD194; ChemR13; CKR4; CMKBR4; HGCN:14099; K5-5
Note:	Specific for Human CCR4. BLAST analysis of the peptide immunogen showed no homology with other human proteins.
Protein Families:	Druggable Genome, GPCR, Transmembrane
Protein Pathways:	Chemokine signaling pathway, Cytokine-cytokine receptor interaction



[View online »](#)

**Product images:**

Human Spleen: Formalin-Fixed, Paraffin-Embedded (FFPE)



Anti-CCR4 antibody IHC of human Lung, Non-Small Cell Carcinoma. Immunohistochemistry of formalin-fixed, paraffin-embedded tissue after heat-induced antigen retrieval.