

Product datasheet for **TA317640**

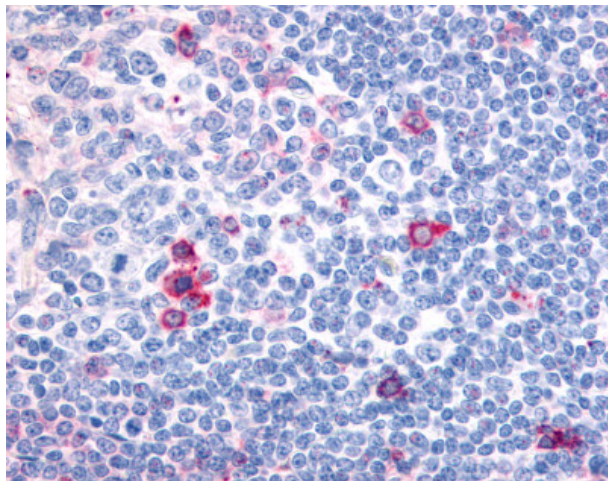
Cannabinoid Receptor II (CNR2) Rabbit Polyclonal Antibody

Product data:

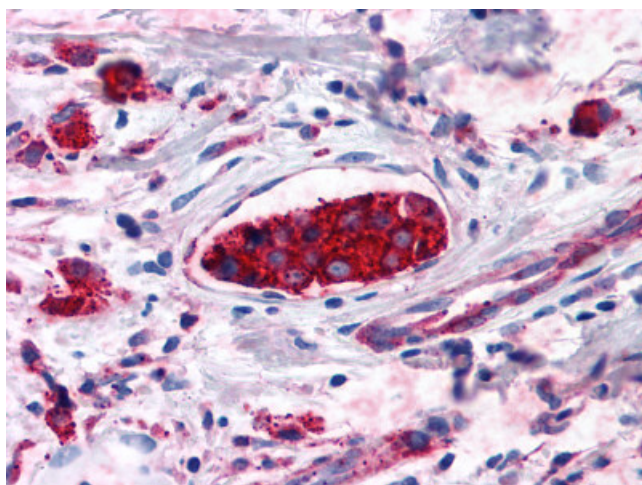
Product Type:	Primary Antibodies
Applications:	IHC
Recommended Dilution:	IHC-P (13 - 26 µg/ml)
Reactivity:	Dog, Gorilla, Human, Monkey, Gibbon (Predicted: Mouse, Rat, Bat, Hamster, Horse)
Host:	Rabbit
Isotype:	IgG
Clonality:	Polyclonal
Immunogen:	CNR2 / CB2 antibody was raised against synthetic 20 amino acid peptide from 3rd cytoplasmic domain of human CNR2 / CB2. Percent identity with other species by BLAST analysis: Human, Gorilla, Gibbon, Monkey, Marmoset, Dog (100%); Mouse, Rat, Elephant, Panda (95%); Hamster, Bat, Horse (90%); Rabbit (85%).
Formulation:	PBS, 0.1% sodium azide.
Concentration:	lot specific
Purification:	Immunoaffinity Chromatography
Conjugation:	Unconjugated
Storage:	Store at -20°C as received.
Stability:	Stable for 12 months from date of receipt.
Gene Name:	cannabinoid receptor 2
Database Link:	NP_001832 Entrez Gene 12802 Mouse Entrez Gene 57302 Rat Entrez Gene 612289 Dog Entrez Gene 711155 Monkey Entrez Gene 1269 Human P34972
Synonyms:	CB-2; CB2; CX5
Note:	Specific for Human CNR2 / CB2. BLAST analysis of the peptide immunogen showed no homology with other human proteins, except CNR1 (60%).
Protein Families:	Druggable Genome, GPCR, Transmembrane
Protein Pathways:	Neuroactive ligand-receptor interaction



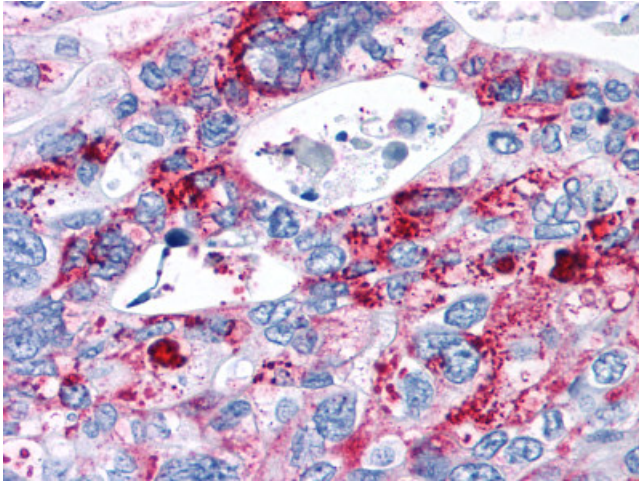
[View online »](#)

Product images:

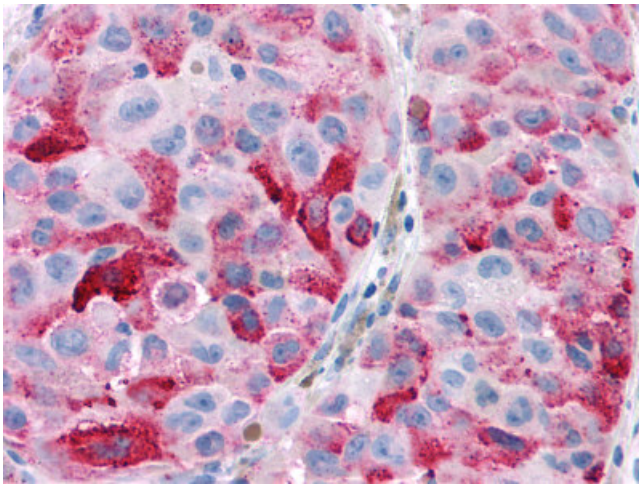
Anti-CNR2 / CB2 antibody IHC of human tonsil, germinal center and mantle zone. Immunohistochemistry of formalin-fixed, paraffin-embedded tissue after heat-induced antigen retrieval.



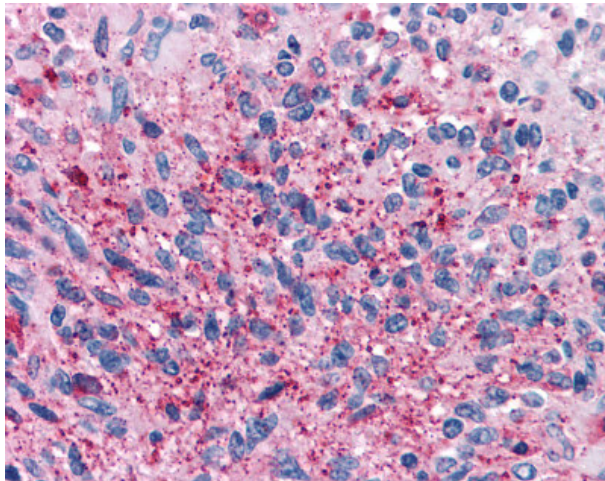
Anti-CNR2 / CB2 antibody IHC of human Breast, Carcinoma. Immunohistochemistry of formalin-fixed, paraffin-embedded tissue after heat-induced antigen retrieval.



Anti-CNR2 / CB2 antibody IHC of human Pancreas, Carcinoma. Immunohistochemistry of formalin-fixed, paraffin-embedded tissue after heat-induced antigen retrieval.



Anti-CNR2 / CB2 antibody IHC of human Skin, Melanoma. Immunohistochemistry of formalin-fixed, paraffin-embedded tissue after heat-induced antigen retrieval.



Anti-CNR2 / CB2 antibody IHC of human Brain, Glioblastoma. Immunohistochemistry of formalin-fixed, paraffin-embedded tissue after heat-induced antigen retrieval.