

## Product datasheet for **TA317638**

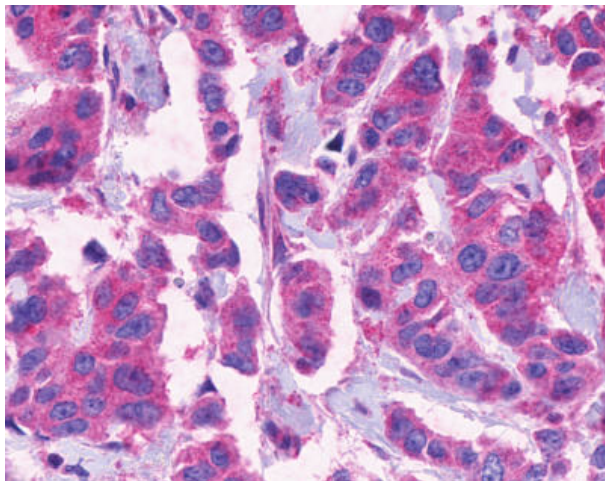
### CCKAR Rabbit Polyclonal Antibody

#### Product data:

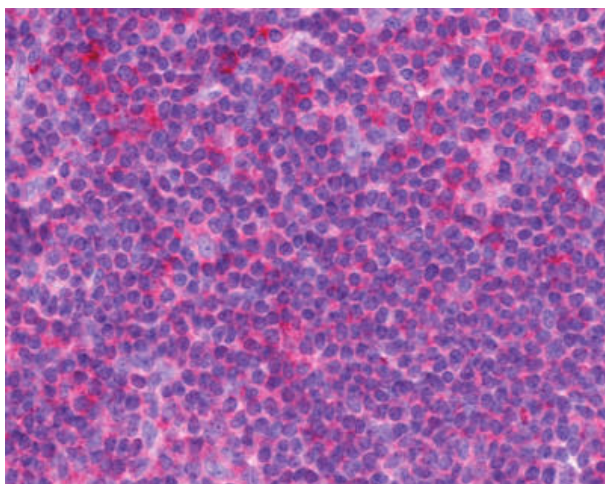
Product Type:	Primary Antibodies
Applications:	IHC
Recommended Dilution:	IHC-P (3 - 6.8 µg/ml)
Reactivity:	Gorilla, Human, Gibbon (Predicted: Monkey, Bovine, Rabbit, Guinea Pig)
Host:	Rabbit
Isotype:	IgG
Clonality:	Polyclonal
Immunogen:	CCKAR / CCK1R antibody was raised against synthetic 16 amino acid peptide from N-terminal extracellular domain of human CCKAR. Percent identity with other species by BLAST analysis: Human, Gorilla, Gibbon, Monkey (100%); Marmoset, Bovine, Rabbit, Guinea pig (94%); Mouse, Elephant, Panda, Bat (88%); Rat, Dog, Horse, Opossum (81%).
Formulation:	PBS, 0.1% sodium azide.
Concentration:	lot specific
Purification:	Immunoaffinity Chromatography
Conjugation:	Unconjugated
Storage:	Store at -20°C as received.
Stability:	Stable for 12 months from date of receipt.
Gene Name:	cholecystokinin A receptor
Database Link:	<a href="#">NP_000721</a> <a href="#">Entrez Gene 694742 Monkey</a> <a href="#">Entrez Gene 886 Human</a> <a href="#">P32238</a>
Synonyms:	CCK-A; CCK1-R; CCK1R; CCKRA
Note:	Specific for Human CCKAR. BLAST analysis of the peptide immunogen showed no homology with other human proteins.
Protein Families:	Druggable Genome, Transmembrane
Protein Pathways:	Calcium signaling pathway, Neuroactive ligand-receptor interaction



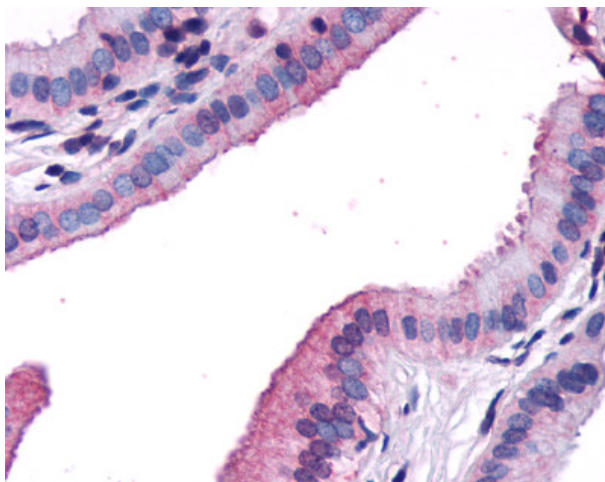
[View online »](#)

**Product images:**

Anti-CCKAR / CCK1R antibody IHC of human Breast, Carcinoma. Immunohistochemistry of formalin-fixed, paraffin-embedded tissue after heat-induced antigen retrieval.



Anti-CCKAR / CCK1R antibody IHC of human Lymph Node, Non-Hodgkins Lymphoma. Immunohistochemistry of formalin-fixed, paraffin-embedded tissue after heat-induced antigen retrieval.



Anti-CCKAR antibody IHC of human gall bladder, epithelium. Immunohistochemistry of formalin-fixed, paraffin-embedded tissue after heat-induced antigen retrieval.

