

## Product datasheet for **TA317637**

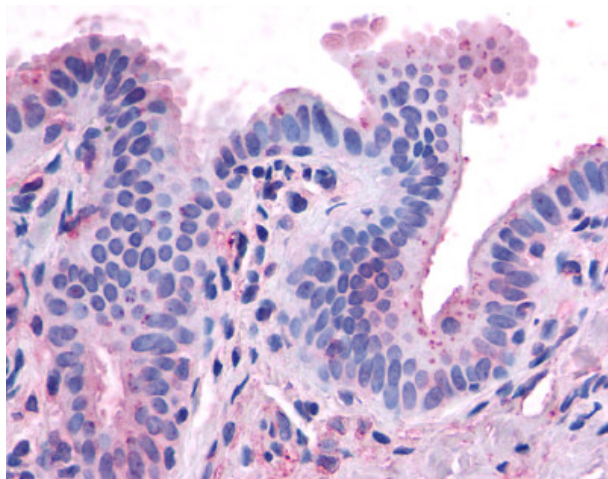
### CCKAR Rabbit Polyclonal Antibody

#### Product data:

Product Type:	Primary Antibodies
Applications:	IHC
Recommended Dilution:	IHC-P (9 µg/ml)
Reactivity:	Human (Predicted: Monkey)
Host:	Rabbit
Isotype:	IgG
Clonality:	Polyclonal
Immunogen:	CCKAR / CCK1R antibody was raised against synthetic 20 amino acid peptide from C-terminus of human CCKAR. Percent identity with other species by BLAST analysis: Human (100%); Gorilla, Gibbon, Marmoset (95%); Monkey (90%); Panda (85%); Elephant, Dog, Guinea pig (80%).
Formulation:	PBS, 0.1% sodium azide.
Concentration:	lot specific
Purification:	Immunoaffinity Chromatography
Conjugation:	Unconjugated
Storage:	Store at -20°C as received.
Stability:	Stable for 12 months from date of receipt.
Gene Name:	cholecystokinin A receptor
Database Link:	<a href="#">NP_000721</a> <a href="#">Entrez Gene 694742 Monkey</a> <a href="#">Entrez Gene 886 Human</a> <a href="#">P32238</a>
Synonyms:	CCK-A; CCK1-R; CCK1R; CCKRA
Note:	Specific for Human CCKAR. BLAST analysis of the peptide immunogen showed no homology with other human proteins.
Protein Families:	Druggable Genome, Transmembrane
Protein Pathways:	Calcium signaling pathway, Neuroactive ligand-receptor interaction



[View online »](#)

**Product images:**

Anti-CCKAR antibody IHC of human gall bladder, epithelium. Immunohistochemistry of formalin-fixed, paraffin-embedded tissue after heat-induced antigen retrieval.